



ControlPoint Client Installation Guide

Version 3.0



QSR Automations, Inc.
2301 Stanley Gault Parkway
Louisville, Kentucky 40223

Tel: 502-297-0221
Fax: 502-297-0223

www.qsrautomations.com

Version: 3.0

Date Revised: 06/20/2014

The information in this publication is subject to change without notice.

QSR AUTOMATIONS INCORPORATED SHALL NOT BE LIABLE FOR TECHNICAL OR EDITORIAL ERRORS OR OMISSIONS CONTAINED HEREIN, NOR FOR INCIDENTAL OR CONSEQUENTIAL DAMAGES RESULTING FROM THE FURNISHING, PERFORMANCE, OR USE OF THIS MATERIAL. THIS INFORMATION IS PROVIDED "AS IS" AND QSR AUTOMATIONS INCORPORATED DISCLAIMS ANY WARRANTIES, EXPRESS OR IMPLIED OR STATUTORY AND EXPRESSLY DISCLAIMS THE IMPLIED WARRANTIES OF MERCHANTABILITY, FITNESS FOR PARTICULAR PURPOSE, GOOD TITLE AND AGAINST INFRINGEMENT.

This publication contains information protected by copyright and is considered confidential. No part of this publication may be photocopied or reproduced in any form without the prior written consent from QSR Automations Incorporated.

© 1996-2014 QSR Automations Incorporated.

All rights reserved. Printed in the U.S.A.

The marks QSR Automations, ConnectSmart, ePic, xCeed, eXpert, KP-4000, WebAhead, and WebReserve are registered trademarks or trademarks of QSR Automations, Inc.

All other trademarks, products, and brand names mentioned in this document are the property of their respective owners.



kitchen display



table management



hardware



recipe viewer



reservations

Table of Contents

OVERVIEW	1
CONTROLPOINT SITE OFFERINGS.....	1
<i>ControlPoint Site Client</i>	1
INSTALLATION NOTES	2
FILE PATH DIRECTORY.....	2
PERMISSIONS	3
INSTALLING CONTROLPOINT AT THE SITE	2
OVERVIEW	4
CONTROLPOINT SITE-LEVEL INSTALLATIONS	4
<i>Site Server Requirements</i>	4
<i>Site Client Requirements</i>	4
CONTROLPOINT SERVER.....	5
CONTROLPOINT CLIENT.....	10
USING CONTROLPOINT RUNTIME BUILDER.....	14
MANUALLY INSTALLING SQL SERVER 2005.....	18
CONTROLPOINT DATABASE INSTALLER	21
CONTROLPOINT DATABASE INSTALLER ARGUMENTS	22
APPENDIX – SETTING UP RDS	23
USING RDS.....	23
<i>Configuring an RDS Device in the ControlPoint Client</i>	23
INSTALLING RDS	24
INDEX	29

ControlPoint Site Offerings

Prior to ControlPoint, if you used CE devices you needed to run the QSR CE Device Console. If you used XP devices, you needed to run Site Manager. Environments with mixed devices used both applications. ControlPoint is a unified platform to control all device types and models. Use ControlPoint to set up and configure QSR eXpert® devices (hospitality controllers), ePic devices, ePic CE devices, xCeed® devices, Onyx devices, and All-In-One devices.

ControlPoint allows for the pre-configuration of devices and automatically recognizes and configures new devices on the network, creating a plug-and-play environment that simplifies implementation and ongoing support. Users also can rely on ControlPoint to download new operating system images, update applications, distribute files, and refresh or reboot devices. It also can gather logs and take screen captures. With ControlPoint, devices on the network can be tested and applications running on the devices can be monitored.

ControlPoint Site Client

The in-store computer running the ControlPoint Client site application establishes two way TCP/IP communications with an enterprise database server. The enterprise server communicates directly with each restaurant site. It also automatically recognizes new devices on the network, enables the pre-configuration of devices, updates devices, and monitors, and troubleshoots.

Through the ControlPoint Client, you can:

- Display active devices on the network
- Stop and start applications and processes
- Set the video resolution of the devices
- Install and configure applications such as ePic Emulator and Display Client software
- Download files and update the CE image (If you want to use a DE-4100 device with an image earlier than 1.9.8, please contact QSR Client Services.
- Reboot the devices
- Capture device screen images
- Edit a device's registry
- Run device diagnostics
- View device memory usage (in Standard or Enterprise mode)
- Set up pagers, printers, and bump bars

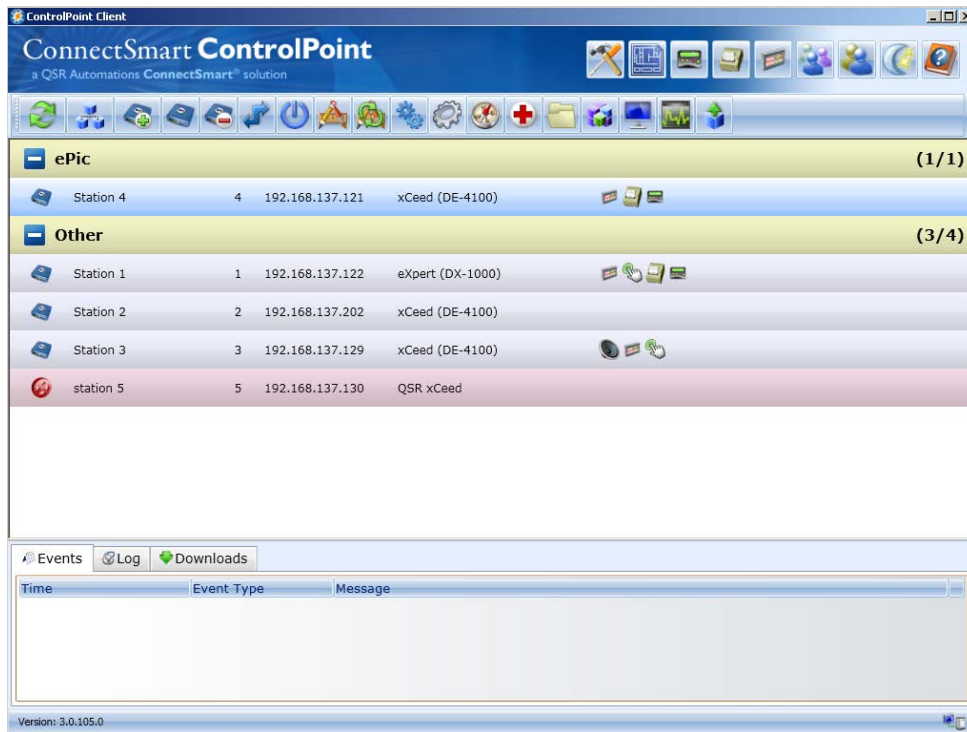


Figure 1.1 – ConnectSmart ControlPoint site client – main screen

An account with the username Administrator and password admin is pre-configured in ControlPoint by default when ControlPoint is installed. On the Connect to ControlPoint form, type Administrator and admin and click **Login**. Once you have logged in, you can change the password.

Installation Notes

If you are using Windows 7 or Windows Server 2008, you must be a true administrator on the PC you are installing ControlPoint (and ConnectSmart) on. Make sure you have administrator rights on the PC you will be installing QSR applications. If you do not and you are running Windows 7 or Windows Server 2008, right-click the program (.exe file) and select *Run as administrator*.

File Path Directory

After running the ControlPoint 3.0 installer, the location of the ControlPoint Server, ControlPoint Client, ControlPoint Builder, and other executables will differ depending on the operating system in use.

For **32-bit operating systems** (including XP, Windows 7 32-bit, Server 2008 32-bit, and Server 2003):

C:\Program Files\QSR Automations\ControlPoint\ControlPointServer\Bin includes ControlPointServer, ControlPointBuilder, ConnectSmartValidator, and dll files.

C:\Program Files\QSR Automations\ControlPoint\ControlPointClient\Bin includes the ControlPoint Client, and help and dll files.

C:\Program Files\QSR Automations\ControlPoint\ClientInstalls\folders for the ConnectSmart Network Configuration tool, the ControlPointClient, setup, ControlPoint DatabaseInstaller, ControlPoint DataImport, ConvertToControlPoint, and RDS Install.

For **64-bit operating systems** (including Windows 7 64-bit, Server 2008 64-bit, Windows 8, and Server 2012):

C:\Program Files (x86)\QSR Automations\ControlPoint\ControlPointServer\Bin includes ControlPointServer, ControlPointBuilder, ConnectSmartValidator, and dll files.

C:\Program Files (x86)\QSR Automations\ControlPoint\ControlPointClient\Bin includes the ControlPoint Client, and help and dll files.

C:\Program Files (x86)\QSR Automations\ControlPoint\ClientInstalls\folders for the ConnectSmart Network Configuration tool, the ControlPointClient, setup, ControlPoint DatabaseInstaller, ControlPoint DataImport, ConvertToControlPoint, and RDS Install.

The location of the data files for these executables also varies by operating system.

For **Microsoft XP and Server 2003**, all data files for ControlPoint Server, ControlPoint Builder, and more will be written to folders in this location:

C:\Documents and Settings\All Users\Application Data\QSR Automations\ControlPoint.

For **Windows 7 and later operating systems**, the data files and folders are contained within this directory: C:\ProgramData\QSR Automations\ControlPoint.

Note: The ConnectSmartNetwork.xml file for ControlPoint Server is found in C:\ProgramData\QSR Automations\ConnectSmart\ControlPointServer\Data.

The ConnectSmartNetwork.xml file for ControlPoint Client is found in C:\ProgramData\QSR Automations\ConnectSmart\ControlPointClient\Data.

Permissions

QSR recommends that you be logged into your PC with an administrative account **before** beginning any QSR application installation. If you have a limited account or restrictions set in Windows XP, it is possible that BackOffice will not be able to connect to the database.

Installing ControlPoint at the Site 2

Overview

This chapter details the steps you must take to get ControlPoint running correctly at the site level, including server and client installation.

ControlPoint Site-Level Installations

These requirements apply to computers that are dedicated to QSR applications. Consideration should be given to the resource needs of other applications when the hardware used is not dedicated to the ConnectSmart application suite.

Site Server Requirements

Component	Type/Amount
Operating System(s)	Windows XP SP3 Windows Server 2003 SP1 Windows Server 2008 – 32 and 64 bit Windows 7 – 32 and 64 bit Windows 8 – 32 and 64 bit Windows Server 2012
Processor	Minimum: 1.5GHz, Recommended: 2GHz or faster
RAM	Minimum: 1GB RAM, Recommended: 2GB RAM or greater
Hard Disk Space	20 GB
Prerequisite Software	Microsoft .NET 4.0 C++ Runtime 2010

Table 2.1 – ControlPoint Site-Level Server requirements

Site Client Requirements

Component	Type/Amount
Operating System(s)	Windows XP SP3 Windows Server 2003 SP1 Windows Server 2008 – 32 and 64 bit Windows 7 – 32 and 64 bit Windows 8 – 32 and 64 bit Windows Server 2012
Processor	Minimum: 1.5GHz, Recommended: 2GHz or faster
RAM	Minimum: 1GB RAM, Recommended: 2GB RAM or greater
Hard Disk Space	2 GB (available for installation)
Display	1024x768 (minimum)
Prerequisite Software	Microsoft .NET 4.0 C++ Runtime 2010

Table 2.2 – ControlPoint Site-Level Client requirements

If your SQL Server is on a dedicated machine, it must also meet all recommended Microsoft SQL Server installation prerequisites.

ControlPoint requires RDSAPI and the RDS folder structure (RDS\Data, etc.) in order to successfully configure the ePic Emulator.

If you are using any third-party kitchen software that runs on the ePic Emulator and does not install RDS by default, you will need to install RDSSetup_Minimal from the ENGLISH\RDSInstall folder on the CD or the C:\Program Files\QSR Automations\ControlPoint\ClientInstalls\RDSInstall folder after installing ControlPointServer. (For 64-bit operating systems, the folder will be Program Files (x86) and not Program Files.)

ControlPoint Server

1. Insert the installation CD. Double-click ControlPointServerSetup.exe.
2. Click **Run** through any security warnings.

Note: If you do not have .NET Version 4.0 installed, a prompt appears saying you must install it. **Note:** If you do not have C++ Runtime 2010 installed, a prompt appears saying you must install it. Click **OK**. You can install C++ Runtime 2010 from installation disk, which is located at: ..\ENGLISH\ CPP_Runtime_2010_x86. Once this is installed, you will need to start the installation process from the beginning.

The Welcome to the QSR Automations ControlPoint Server Setup Wizard screen appears.



Figure 2.1 – Welcome to ControlPoint Server Setup Wizard

3. Click **Next** to continue through the ControlPoint Server Setup Wizard. The Destination Folder screen appears.

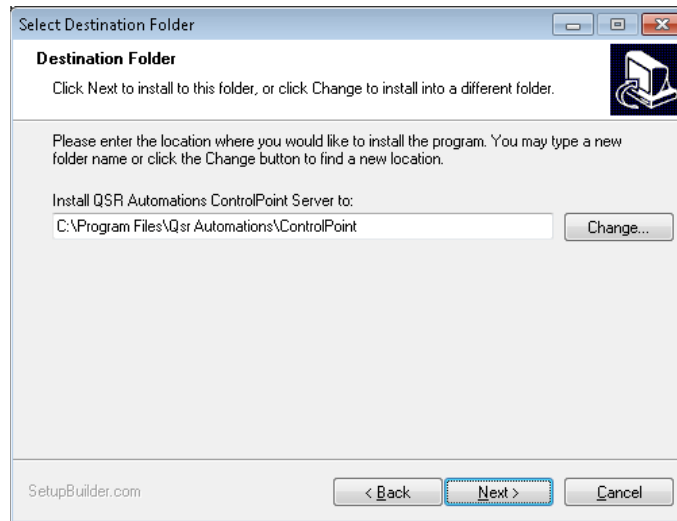


Figure 2.2—Destination Folder screen

4. Select the default installation destination for the ControlPoint Server or click **Change** and browse to another destination.

If you are running ControlPoint on a Windows 7 64-bit PC, the path will be C:\Program Files (x86)\Qsr Automations\ControlPoint.

5. Click **Next**. The License Agreement screen appears.

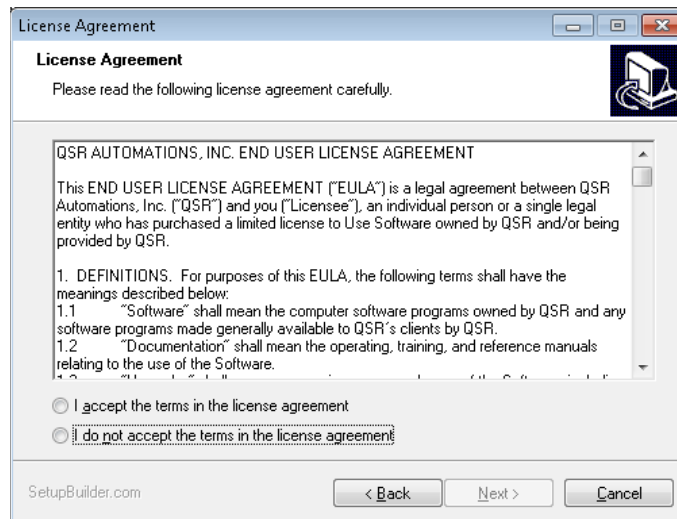


Figure 2.3—License Agreement screen

6. Please read the End User License Agreement carefully. After reading the agreement, select *I accept the terms in the license agreement* and click **Next**. The Ready to Install the Program screen appears.

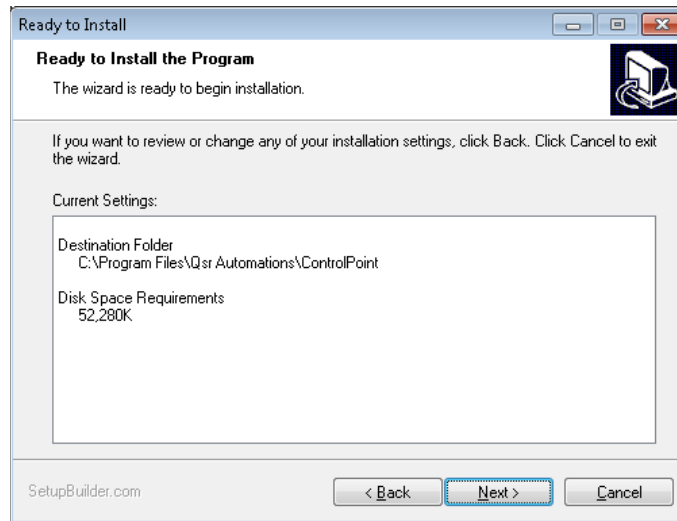


Figure 2.4 – Ready to Install screen

7. Review the settings. To begin installation, click **Next**. To quit the installation, click **Cancel**.

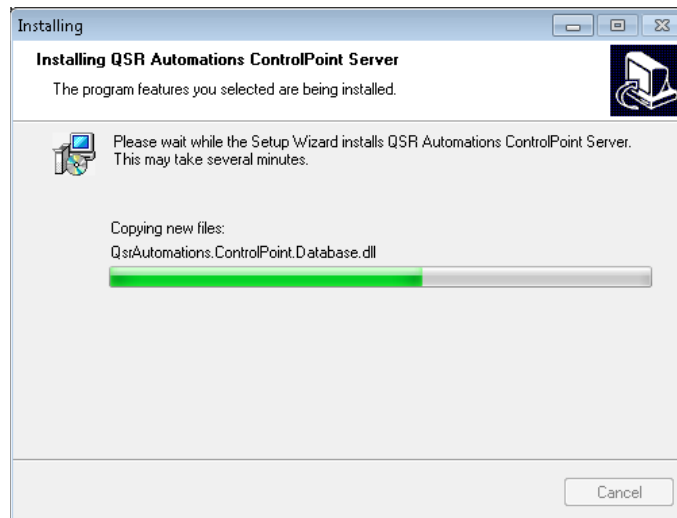


Figure 2.5 – ControlPoint Server Installation

As ControlPoint Server components are installed, you can see the progress of the installation. The ConnectSmart Network Configuration application appears.

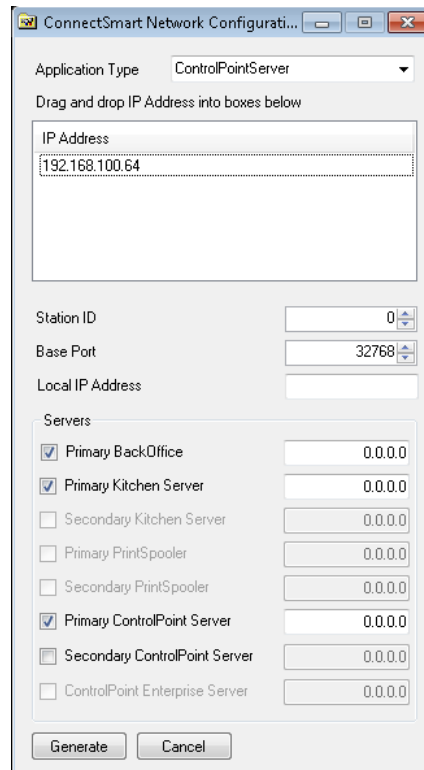


Figure 2.6 – Network Configuration – ControlPoint Server

8. For Station ID, accept the default 0.
9. For Base Port, accept the default 32768.
10. Drag and drop the appropriate IP address to the Local IP Address and Primary ControlPoint Server fields.
11. Click **Generate**. A confirmation message appears.

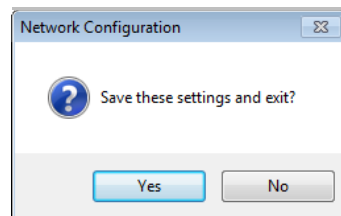


Figure 2.7 – Confirmation message

12. Click **Yes**. The installation continues, and the wizard ends.

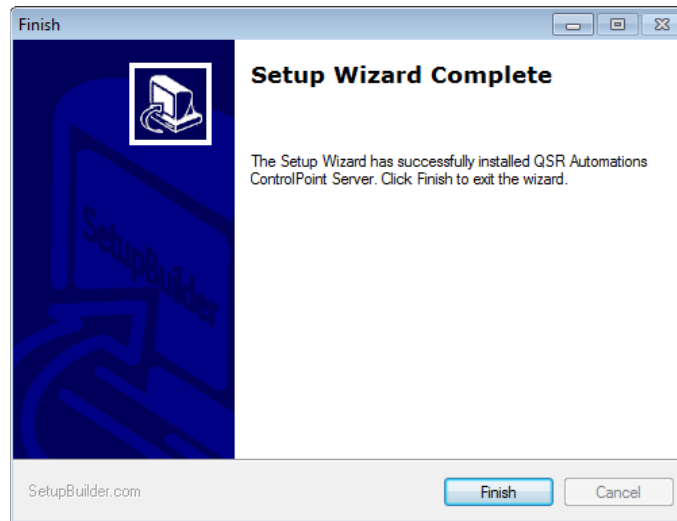


Figure 2.8 – ControlPoint Server Installation Complete

13. Click **Finish**.

If you are running ControlPoint in Standard or XML mode, additional licensing and validation is only required for non-QSR software and hardware. Go to C:\Program Files\QSR Automations\ControlPoint\ControlPointServer\bin and open the ConnectSmart Validator.

If you are running ControlPoint on a Windows 7 64-bit PC, the path will be C:\Program Files (x86)\Qsr Automations\ ControlPoint\ControlPointServer\bin.

Contact QSR Technical Support at (502) 297-0221 option 6 or e-mail support@qsrautomations.com.

Select an application and provide Customer Support the site code number. They will provide you with a validation code. Once you enter the validation code, click **Validate**. The Status will change from *NotValidated* to *Validated*. Do this for both non-QSR software and hardware.

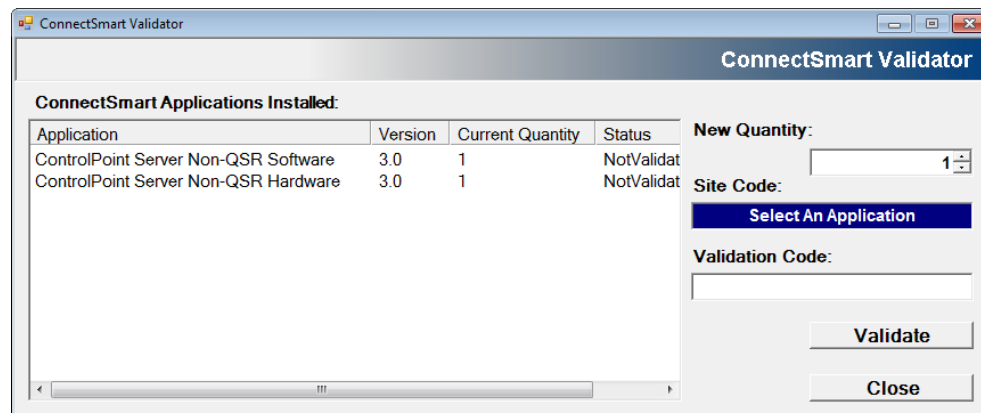


Figure 2.9 – ConnectSmart Validator – ControlPoint non-QSR applications

Note: When ControlPoint Server is upgraded and started, it sends a message to automatically upgrade the ControlPoint Client, by silently calling the ControlPointClientSetup.exe in the ClientInstalls folder. This will automatically run the ControlPointClientSetup without any user interaction. Automatic upgrades require that ControlPoint is installed to the default path. For an XP install, this path is "C:\Program Files\QSR Automations\ControlPoint\". For a Windows 7 install, this is "C:\Program Files (x86)\QSR Automations\ControlPoint".

However, if you are using Windows 7 or Windows Server 2008, you will need to disable all User Account Control settings in order for this to silently upgrade.

Otherwise, you will need to click through a prompt authorizing the installation before the install will start. This would especially be important if you are using ControlPoint Enterprise, and are attempting to automatically upgrade 100 sites using Windows 7.

ControlPoint Client

1. Insert the installation CD. Double-click ControlClientSetup.exe.

Note: If you do not have .NET Version 4.0 installed, a prompt appears saying you must install it. If you do not have C++ Runtime 2010 installed, a prompt appears saying you must install it. Click **OK**. You can install C++ Runtime 2010 from installation disk, which is located at: ..\ENGLISH\ CPP_Runtime_2010_x86. Once this is installed, you will need to start the installation process from the beginning.

The Welcome to QSR Automations ControlPoint Client Setup Wizard screen appears.



Figure 2.10—Welcome to ControlPoint Client Setup Wizard

2. Click **Next** to continue through the ControlPoint Client Setup Wizard. The Select Destination Folder screen appears.

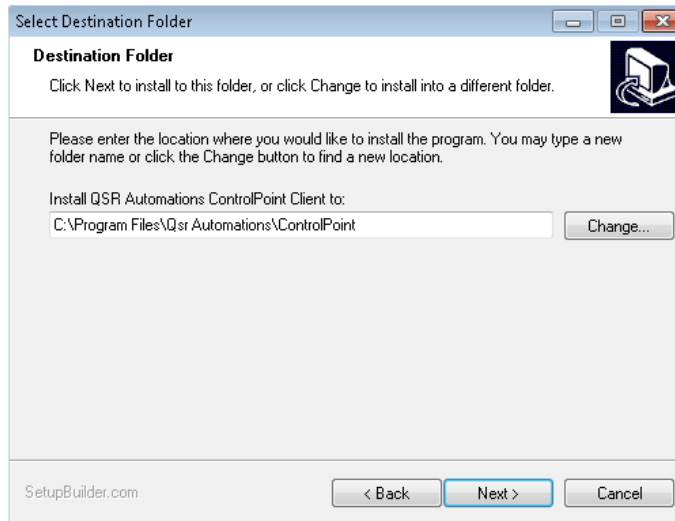


Figure 2.11 – Destination Folder screen

3. Select the default installation destination for the ControlPoint Client or click **Change** and browse to another destination.

If you are running ControlPoint on a Windows 7 64-bit PC, the path will be C:\Program Files (x86)\Qsr Automations\ControlPoint.

4. Click **Next**. The License Agreement screen appears.

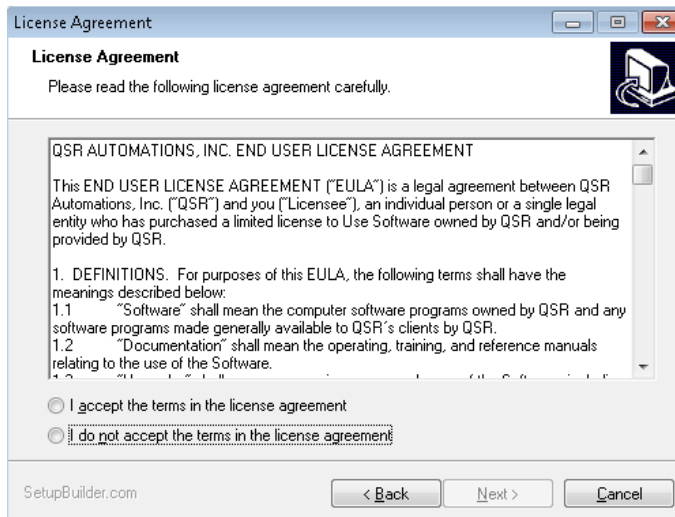


Figure 2.12 – License Agreement screen

5. Please read the End User License Agreement carefully. After reading the agreement, select *I accept the terms in the license agreement* and click **Next**. The Ready to Install the Program screen appears.

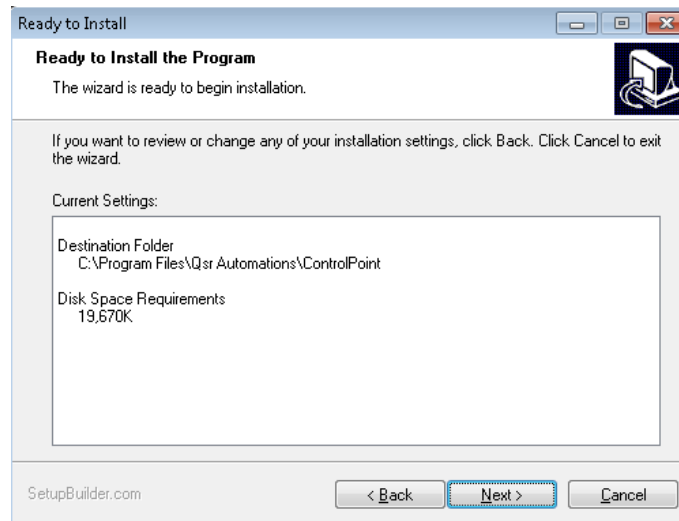


Figure 2.13— Confirm ControlPoint Client Installation

6. Review the settings. To begin installation, click **Next**. To quit the installation, click **Cancel**.

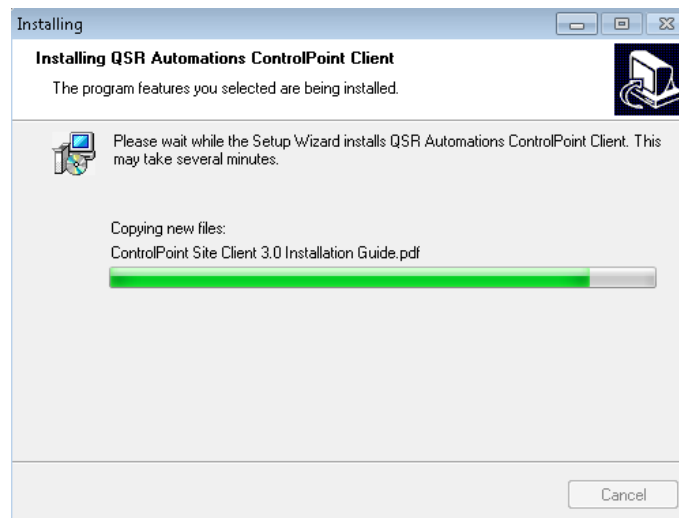


Figure 2.14— ControlPoint Client Installation

As ControlPoint Client components are installed, you can see the progress of the installation. The ConnectSmartNetwork Configuration application appears.

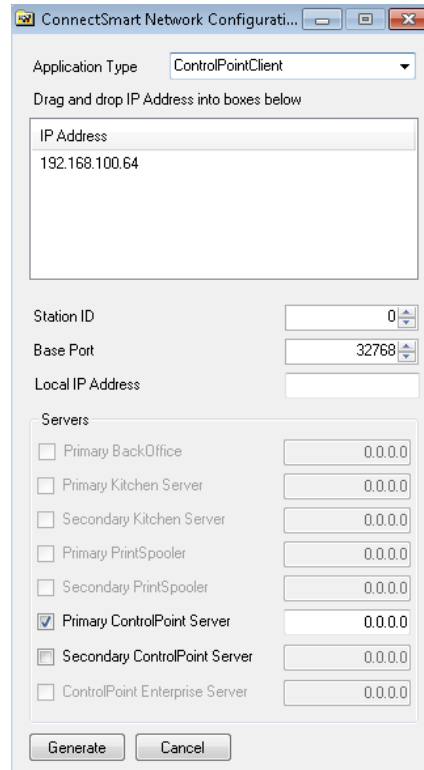


Figure 2.15 – Network Configuration – ControlPoint Server

7. For Station ID, accept the default 0.
8. For Base Port, accept the default 32768.
9. Drag and drop the appropriate IP address to the Local IP Address and Primary ControlPoint Server fields.
10. Click **Generate**. A confirmation message appears.

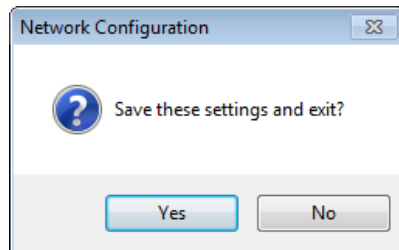


Figure 2.16 – Confirmation message

11. Click **Yes**. The installation continues, and the wizard ends.

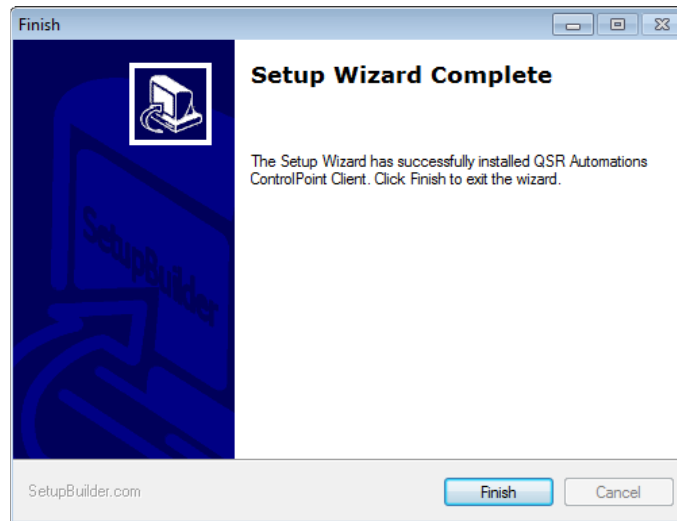


Figure 2.17— ControlPoint Client Installation Complete

12. Click **Finish**.

Using ControlPoint Runtime Builder

Use the ControlPoint Runtime Builder to establish the database connection and to configure the IP connection to the Enterprise Server (if it is being used). When ControlPoint is launched, it must first connect to the database. The Runtime Builder is necessary to establish that connection.

Note: ControlPoint Server version information is logged at the end of day (EOD).

If your store is running in Standard mode and no connection to the Enterprise is necessary, the sole purpose of the Runtime Builder is to write the database connection string information to the time settings file. If the store is running in Enterprise mode, in addition to the database connection string information, it also needs to know the IP address of the Enterprise site to be able to communicate with the Server. You also have the option run in XML mode, which does not require a SQL database.

Go to C:\Program Files\Qsr Automations\ControlPoint\ControlPointServer\bin. Open ControlPointBuilder.exe.

If you are running ControlPoint on a Windows 7 64-bit PC, go to C:\Program Files (x86)\Qsr Automations\ControlPoint\ControlPointServer\bin.

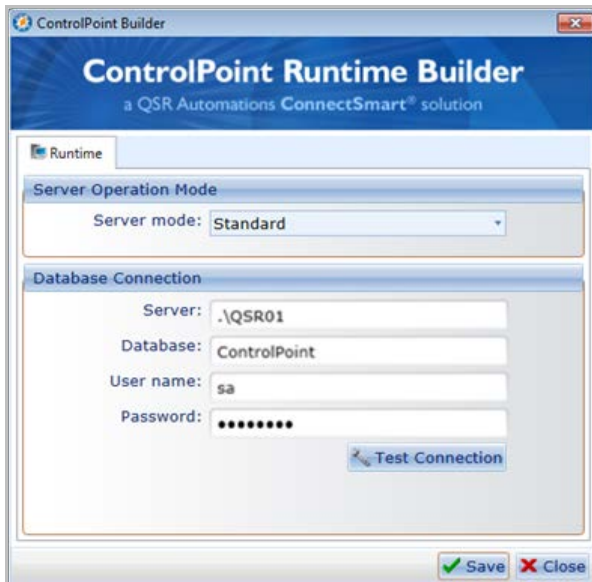


Figure 2.18 – ControlPoint Runtime Builder – Standard mode

Select a server mode: *XML*, *Standard*, or *Enterprise*.

XML – This mode is for site level-only use by those who want to run ControlPoint without a SQL database.

Pros: It is the simplest mode to implement, and it uses fewer resources. Also, it is easy to copy configuration files from one restaurant to another.

Cons: There is no memory usage monitoring of hardware devices.

Standard – This mode is for site level-only use by those who use a SQL database.

Pros: It has memory usage monitoring and an easy upgrade path to Enterprise.

Cons: This mode requires SQL Database/instance to be installed and is more difficult to copy configuration from one site to next. In addition, it uses slightly more system resources than XML mode.

Enterprise – This mode is required for Enterprise connectivity.

If you select *XML*, click **Save** to exit the Runtime Builder. Run the ControlPoint Server service (recommend setting to *Automatic*) and ControlPoint Client to begin configuration.

If you select *Standard* or *Enterprise* mode, only then are you required to run the Control Point Database installer. See page 18.

For example, if your restaurant has only one location, you would be using a Standard or XML server mode. If you are part of a chain with numerous locations, it is more likely that you would be using an Enterprise server mode, especially if the store's settings and devices will be managed from another location. However, a store may be part of a chain but still act independently and do its own configuration. Or a store may be part of a big chain where all are managed from a central location.

If you select *XML*, no other fields appear.

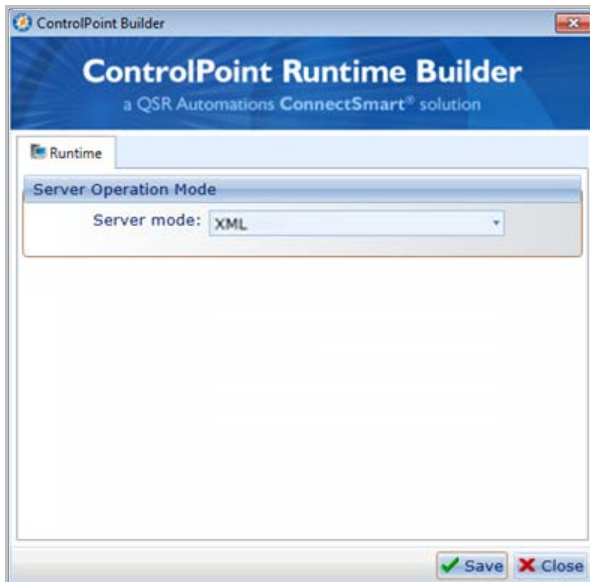


Figure 2.19 – ControlPoint Runtime Builder – XML mode

If you select *Standard*, database connection fields appear.

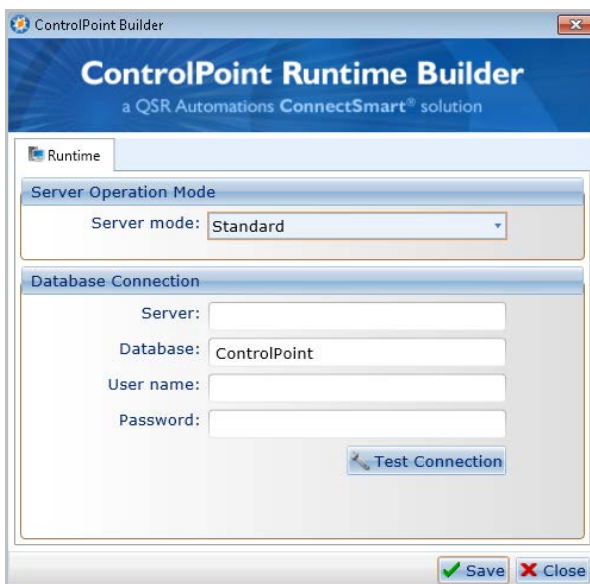


Figure 2.20 – ControlPoint Runtime Builder – Standard mode

If you select *Enterprise*, an Enterprise tab will appear on the form.

Figure 2.21- ControlPoint Runtime Builder – Enterprise mode

If you are using either Standard or Enterprise server mode, enter the database server path (e.g. .\QSR01), the database name (e.g. ControlPoint), and a database system administrator login user name and password. Click **Test Connection**. If your connection is fine, a confirmation message appears. If your attempt to connect failed, a different message appears.

If you are using Enterprise Server Mode, go to the Enterprise tab.

Figure 2.22 – ControlPoint Runtime Builder – Enterprise mode – Enterprise tab

Enter the store number for this site. This number must match the number given to the site (store) on the Site form of the ControlPoint Enterprise Client. Enter the store's local IP address, and for Remote IP address, enter the Enterprise server's IP address. Enter the Enterprise port that is used for site-to-enterprise communication. This will be the same for every site that is part of the Enterprise. QSR recommends 50250. If you are using a software router, select *Enable Enterprise Router* and enter the router address and port.

If you are using Enterprise Mode, a warning message appears if required fields are left blank on the enterprise tab.

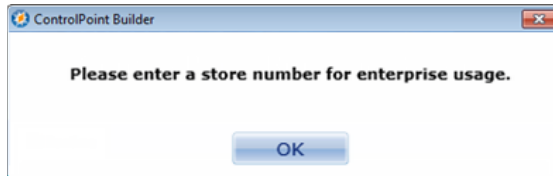


Figure 2.23 – ControlPoint Runtime Builder – Missing field Store number message

When you have completed Builder setup, a confirmation message appears.

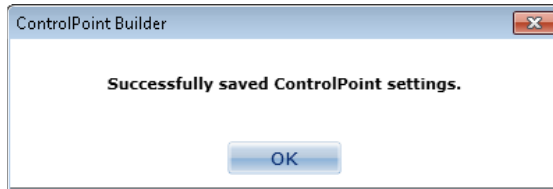


Figure 2.24 – ControlPoint Runtime Builder – Saved message

Click **Yes** and click **Close** on the ControlPoint Runtime Builder.

Manually Installing SQL Server 2005

Although SQL Server 2005 is not required to run ControlPoint in XML mode, to run in Standard mode, ControlPoint requires SQL Server 2005 SP3 or later.

SQL Server 2005 SP3 and SP4 are included as part of the installer. Since SQL Server does not automatically install with ControlPoint, however, any SQL Server installation must be done manually. You can find the SQL files on your installation disk.

This section details the necessary steps to install SQL Server Express 2005 outside of a QSR install so that it still works correctly once a QSR install is completed. All defaults should be accepted during the install except those explicitly noted here.

On the Registration Information form, clear (uncheck) *Hide advanced configuration options*.

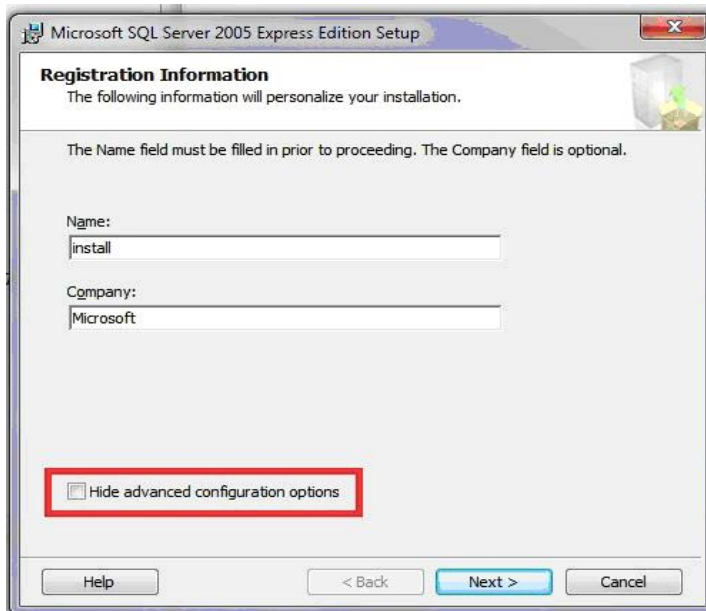


Figure 2.25 - SQL Server 2005 Express Setup - Registration Information
On the Instance Name form, select *Named Instance* and enter QSR01.

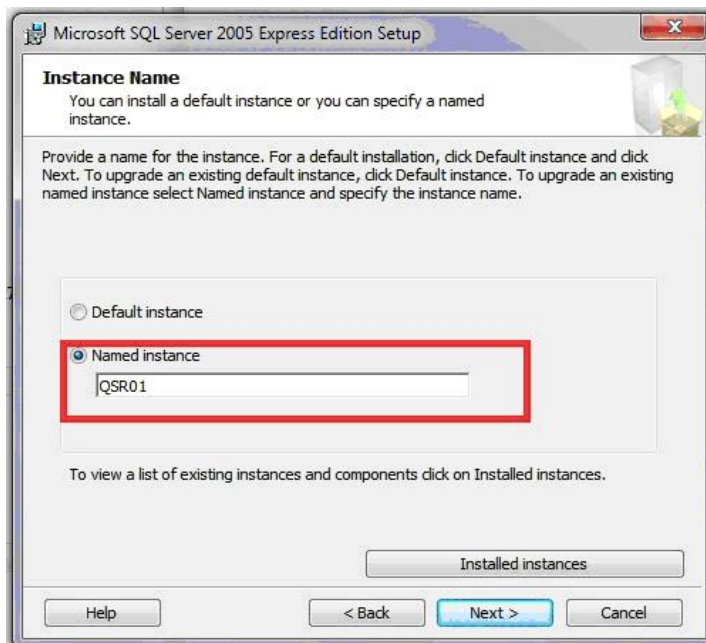


Figure 2.26 - SQL Server 2005 Express Setup - Instance Name

On the Service Account form, use the Built-in System account of Network Service and select *SQL Browser* under Start services at end of setup.



Figure 2.27 – SQL Server 2005 Express Setup – Service Account

On the Authentication Mode form, select *Mixed Mode* and enter Qsr@1996 as the password.



Figure 2.28 – SQL Server 2005 Express Setup – Authentication Mode

Finish installation accepting the remaining defaults.

ControlPoint Database Installer

Use the Database Installer if you are running your server in a Standard or Enterprise Mode. If you are running it in XML mode, you do not need to configure the ControlPoint Database installer application.

1. Once you have installed the ControlPoint Server and ControlPoint Client, go to C:\Program Files\Qsr Automations\ControlPoint (or elsewhere if you saved it in a location other than this default location) and open the ClientInstalls folder.

If you are running ControlPoint on a Windows 7 64-bit PC, go to C:\Program Files (x86)\Qsr Automations\ControlPoint (or elsewhere if you saved it in a location other than this default location).

2. Open the ControlPointDatabaseInstaller folder.
3. Run ControlPointDatabaseInstaller.exe.

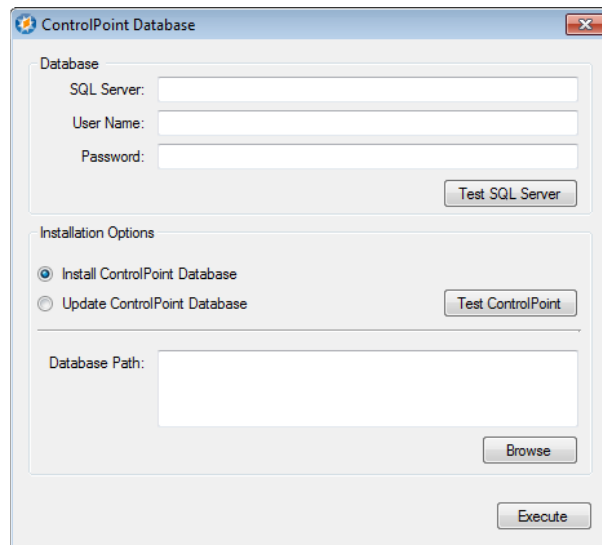


Figure 2.29 – ControlPoint Database installer

4. Enter the SQL server name (e.g. .\qsr01).
5. Enter the user name and password created for the database during the installation process. If you do not have a name and password, contact QSR Automations.
6. Select whether you want to install or update the ControlPoint database.

If installing the ControlPoint database, click **Browse**. Using the Browse For Folder dialog box, select the path C:\Program Files\Microsoft SQL Server\MSSQL.1\MSSQL\Data and click **Execute**.

If you are running ControlPoint on a Windows 7 64-bit PC, select the path C:\Program Files (x86)\Microsoft SQL Server\MSSQL.1\MSSQL\Data.

When installation is complete, an *Operation Complete* confirmation message appears. Click **OK**.

Click **Test SQL Server**. A confirmation message appears – *Successfully connected to SQL Server* – if the connection was successful. An error message appears – *Could not connect to SQL Server* – if the connection failed.

Click **Test ControlPoint**. A confirmation message appears – *Successfully connected to ControlPoint database* – if the connection was successful. An error message appears – *Could not connect to ControlPoint Database* – if the connection failed.

Note: If you click *Test SQL Server* or *Test ControlPoint* before installing the database, you will receive an error message.

If updating a ControlPoint database, select *Update ControlPoint Database* and click **Execute**. When installation is complete, an *Operation Complete* confirmation message appears. Click **OK**.

7. Click **X** to close the application.

ControlPoint Database Installer Arguments

Table 2.1 describes the arguments. The upgrade and silent options do not take a value, but the other four arguments have values separated by a space. As with any command line tool, anything that might have spaces should be surrounded by quotes.

Argument	Description
/server	The SQL Server instance
/user	The user name used to login
/password	The password used to login
/upgrade	Specify the upgrade option instead of a fresh install. Install is default and will create the database
/path	The path to use to locate the database file on install
/silent	Run the process without a UI. Must specify all parameters to ensure success.

Table 2.1 – Argument descriptions

Note: The path argument is only needed if the upgrade flag is not specified. If upgrading, it simply applies the embedded build script.

Appendix – Setting up RDS

Using RDS

ControlPoint 3.0 has full support of RDS devices. These devices include the DE2200, DE3000, and DE4000. In order to utilize this support, you must install RDS. Without installing this new package of RDS, RDS communication will not be available. You will, however, still be able to configure these devices.

ControlPoint provides support for these devices by communicating with them with the RDSAPI, which was used for RDS Console. These devices do not run a version of Qsr Device Agent, and some ControlPoint features available for other devices will not be available for RDS devices. However, this support does provide a mechanism to utilize ControlPoint as a replacement to RDS Console and opens the possibility of having mixed devices in the kitchen managed by one software tool.

Configuring an RDS Device in the ControlPoint Client

When configuring an RDS device (*QSR DE2200*, *QSR DE3000*, or *QSR DE4000*), the Device form includes only Network and ePic Settings tabs.

The screenshot shows the 'ControlPoint Client' window with the 'Device' tab selected. The 'QSR Cafe' logo is in the top right. The 'Device ID' is set to 2. The 'Description' field is empty. The 'Device Type' is set to 'QSR DE4000'. The 'Device Group' is set to 'QSR DE4000'. Below these fields are two tabs: 'Network' (selected) and 'ePic Settings'. The 'Network' tab contains a 'Change Network Settings' dialog box with an 'IP Address' field set to '0.0.0.0'. At the bottom of the window are 'Save', 'Cancel', and 'Apply' buttons.

Figure A.1 – Device form – Network tab – DE4000 device example

On the Network tab, enter the device's IP address, which is transmitted to the device whenever ControlPoint detects a new registered RDS device. This allows for the configuration of devices without them needing to be online.

The screenshot shows the 'ControlPoint Client' window with the 'Device' tab selected. The 'ePic Settings' sub-tab is active. The 'Device' section contains the following fields: Device ID (2), Description (Fry), Device Type (QSR DE4000), and Device Group (Kitchen). Below this is the 'Auxiliary Device' section with the following fields: Model (None), Port (COM1), Baud (9600), Parity (None), Data Bits (8), and Stop Bits (1). At the bottom of the window are three buttons: Save, Cancel, and Apply.

Figure A.2 – Device form – ePic Settings tab – DE4000 device example

The ePic Settings tab is similar to the ePic Emulator tab for non RDS devices, but does not have an entry for setting the font names.

Installing RDS

The version of RDS installed with ControlPoint 3.0 is 12.2.3.0. If you are using KDS 12.2, it is not necessary to run the RDS Minimal installation. However, if you are using an earlier version of KDS, you must run the RDS Minimal installation. If you re-install a version of KDS that is earlier than 12.2.3.0, you must re-run the RDS Minimal installation for ControlPoint 3.0 to manage RDS devices.

Also, if you are using any third-party kitchen software that runs on the ePic Emulator and does not install RDS by default, you will need to install RDSSetup_Minimal.

If you do not already have KDS 12.2 or later installed, follow the instructions below to install RDSSetup_Minimal.

1. Insert the installation CD and go to Disk 1\ENGLISH\RDSInstall. Double-click RDSSetup_Minimal.exe. The Welcome to QSR ePic RDS Setup Wizard screen appears.



Figure A.3 – Welcome to the QSR ePic RDS Setup Wizard

2. Click **Next** to continue through the ePic RDS Setup Wizard. The License Agreement screen appears.

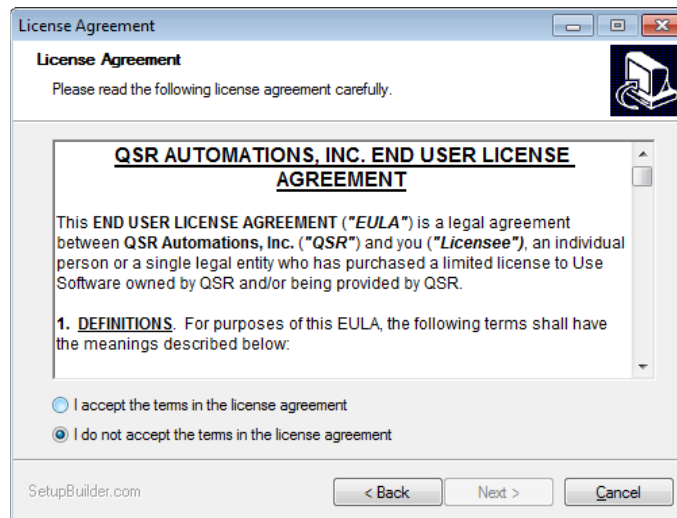


Figure A.4 – License Agreement screen

3. Please read the End User License Agreement carefully. After reading the agreement, select *I accept the terms in the license agreement* and click **Next**. The Setup Type screen appears.

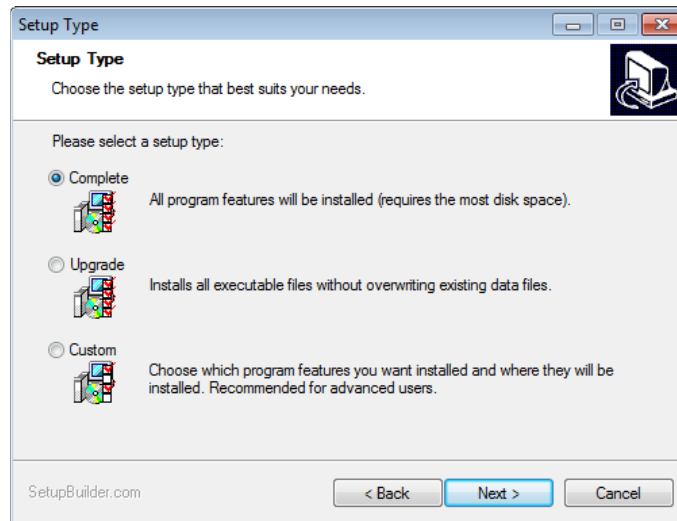


Figure A.5 – Setup Type screen

Select a setup type: *Complete*, *Upgrade*, or *Custom*. Click **Next**. The Destination Folder screen appears.

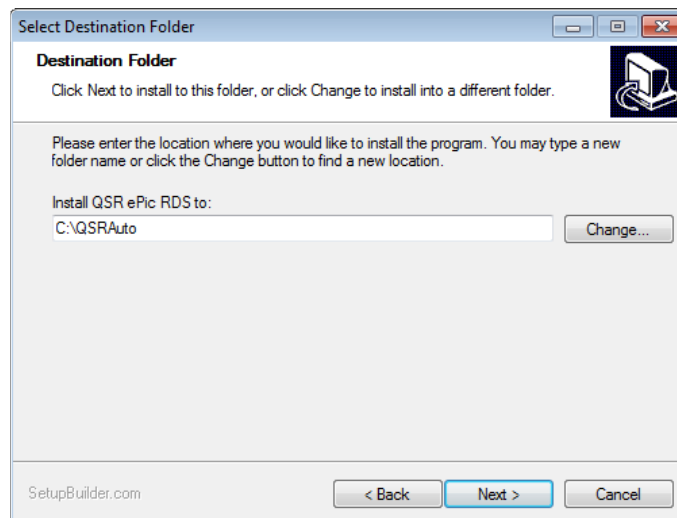


Figure A.6 – Destination Folder screen

4. Select the default installation destination for ePic RDS or click **Change** and browse to another destination.
5. Click **Next**. The Ready to Install the Program screen appears.

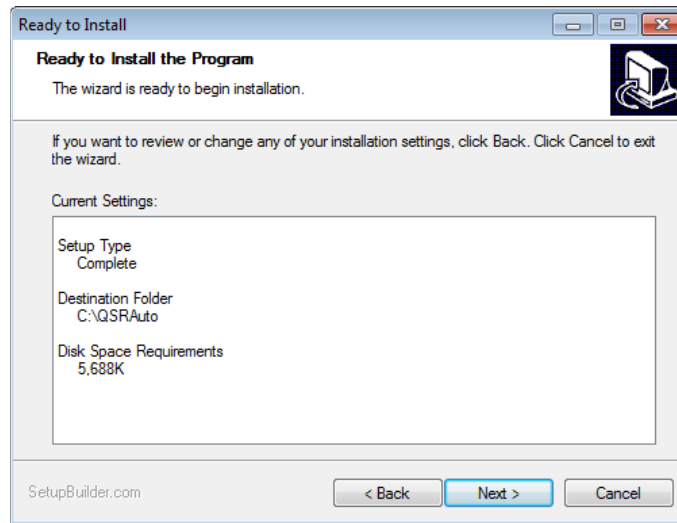


Figure A.7 – Ready to Install the Program screen

6. Review the settings. To begin installation, click **Next**. To quit the installation, click **Cancel**.

RDS components are installed. You can see the progress of the installation.

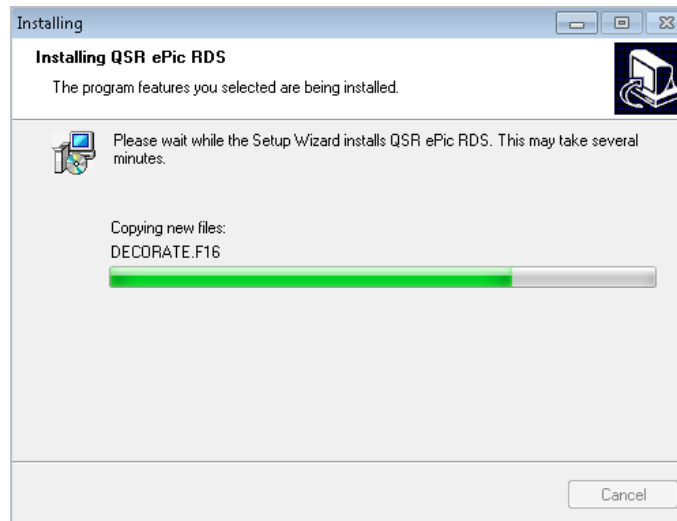


Figure A.8 – Installing in progress

Once the installation completes, the wizard ends.

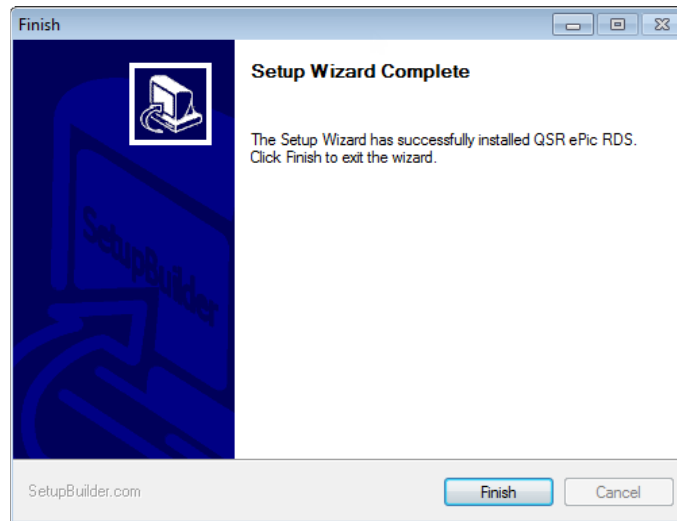


Figure A.9 – ePic RDS Installation Complete

7. Click **Finish**. A message appears prompting you to restart your computer.

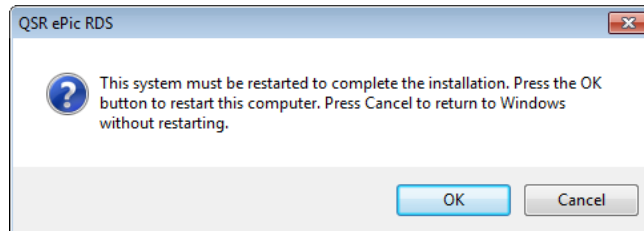


Figure AB.10 – Restart message

Note: If the RDS prerequisite Microsoft Visual C++ 2005 SP1 Runtime is not already on the PC you are installing RDS on, a prompt appears saying you must install Visual C++ before RDS will complete its installation.

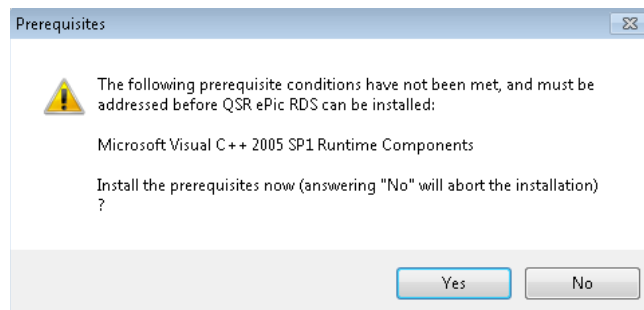


Figure AB.11 – Visual C++ message

Click **Yes** and the Visual C++ installation begins.

Index

A

Administrator Rights, 2

C

ControlPoint Client, 1
ControlPoint Database Installer, 21
ControlPoint Runtime Builder, 14
ControlPoint Site Client, 1

D

Database Installer Arguments, 22

F

Features, 1
File Path Directory, 2

H

Hardware Requirements, 4

I

Installing RDS, 24

N

Network Configuration, 7, 12

P

Permissions, 3

R

RDS, 23
RDSAPI, 5

S

Server Mode - Enterprise, 15
Server Mode - Standard, 14
Server Mode - XML, 14
Site Client Requirements, 5
Software Requirements, 4

U

User Name and Password, 2