



# ConnectSmart Kitchen Installation Guide

Version 5.3



QSR Automations, Inc.  
2301 Stanley Gault Parkway  
Louisville, Kentucky 40223

Tel: 502-297-0221

Fax: 502-297-0223

[www.qsrautomations.com](http://www.qsrautomations.com)

Version: 5.3

Date Revised: 07/08/2015

The information in this publication is subject to change without notice.

QSR AUTOMATIONS INCORPORATED SHALL NOT BE LIABLE FOR TECHNICAL OR EDITORIAL ERRORS OR OMISSIONS CONTAINED HEREIN, NOR FOR INCIDENTAL OR CONSEQUENTIAL DAMAGES RESULTING FROM THE FURNISHING, PERFORMANCE, OR USE OF THIS MATERIAL. THIS INFORMATION IS PROVIDED "AS IS" AND QSR AUTOMATIONS INCORPORATED DISCLAIMS ANY WARRANTIES, EXPRESS OR IMPLIED OR STATUTORY AND EXPRESSLY DISCLAIMS THE IMPLIED WARRANTIES OF MERCHANTABILITY, FITNESS FOR PARTICULAR PURPOSE, GOOD TITLE AND AGAINST INFRINGEMENT.

This publication contains information protected by copyright and is considered confidential. No part of this publication may be photocopied or reproduced in any form without the prior written consent from QSR Automations Incorporated.

© 1996-2015 QSR Automations Incorporated.

All rights reserved. Printed in the U.S.A.

The marks QSR Automations, ConnectSmart, DineTime, WebAhead, WebReserve, ePic, xCeed, eXpert, TouchBump, KP-7500, and KP-4000 are registered trademarks or trademarks of QSR Automations, Inc.

All other trademarks, products, and brand names mentioned in this document are the property of their respective owners.



kitchen display



table management



hardware



recipe viewer



reservations

# Table of Contents

---

<b>BEFORE YOU BEGIN</b>	<b>1</b>
INTRODUCTION .....	1
SYSTEM REQUIREMENTS .....	1
<i>Kitchen Server</i> .....	1
<i>QSR Display Client</i> .....	2
<b>PATH DIRECTORIES</b>	<b>2</b>
FULL PATH DIRECTORY .....	3
CONNECTSMARTNETWORK.XML .....	4
<b>INSTALLING KITCHEN SERVER</b>	<b>3</b>
INTRODUCTION .....	5
INSTALLATION STEPS .....	5
<i>Network Configuration Manager</i> .....	12
<b>APPENDIX A - VALIDATION</b> .....	<b>13</b>
<b>APPENDIX B - OPEN SOURCE REFERENCES</b> .....	<b>15</b>
INTRODUCTION .....	15
CRASHRPT .....	15
LIBOGG .....	15
JPEG LIBRARY .....	16
LIBTHEORA .....	17
<b>INDEX</b> .....	<b>18</b>

## Introduction

ConnectSmart Kitchen 5.3 (CSK) is a graphical restaurant kitchen automation system that allows you to customize the routing and display attributes of every item and every order on each kitchen Display Client screen. With CSK, you also have access to real-time speed of service information. CSK 5.3 comes on one installation disc.

This guide discusses the applications that you can install using that disc as well as prerequisite requirements. Before performing a CSK installation, however, make sure all of your hardware meets these minimum system requirements presented here.

Keep in mind that these requirements apply to stations or computers that are dedicated to QSR applications. Consideration should also be given to the resource needs of other applications when the hardware used is not dedicated to QSR applications. All prerequisite software versions shown in this document are specific to a ConnectSmart installation.

**\*Note:** Make sure you have administrator rights on the PC you will be installing CSK or any other QSR application. If you do not and you are running Windows 7 or Windows Server 2008 SP2, right-click the program (.exe file) and select Run as administrator.

**\*Note:** QSR recommends that you be logged into your PC with an administrative account before beginning the CSK (or any other ConnectSmart application) installation.

## System Requirements

Before performing the CSK installations, make sure that all of your hardware meets the following minimum system requirements.

### Kitchen Server

Component	Type/Amount
Prerequisite Software	Microsoft .NET Version 4.0 or later** **Installer will automatically install this if it is not detected for Kitchen Builder, Bin Editor, and Report Viewer only. Kitchen Server does not require .NET
RAM	Minimum: 1 GB Recommended: 2 GB
Processor	Pentium 4 compatible or higher Minimum: 1.4 GHz Recommended: 1.8 GHz or higher
Operating System	Windows XP SP3 Windows Server 2003 SP2 Windows Server 2008 - 32 and 64 bit Windows 7 – 32 and 64 bit Windows 8 – 32 and 64 bit Windows Server 2012 QSR WES7 Image

Table 1.1 – Kitchen Server

**QSR Display Client**

<b>Component</b>	<b>Type/Amount</b>
Prerequisite Software (Win32 version only)	Microsoft CRuntime Library version 8.0 and Microsoft CRuntime Library version 8.0 service pack 1
RAM	Minimum: 256 MB Recommended: 512 MB
Processor	Pentium III compatible or higher Minimum: 266 MHz Recommended: 500 MHz or higher
Operating System	QSR xCeed Image QSR XPe Image QSR WES7 Image Windows XP SP3 Windows Server 2003 SP2 Windows Server 2008 – 32 and 64 bit Windows 7 – 32 and 64 bit Windows 8 – 32 and 64 bit Windows Server 2012

**Table 1.1 – Display Client**

## Full Path Directory

After running the CSK 5.3 installer, the location of the Kitchen Server, Kitchen Builder, Bin Editor, and other executables will differ depending on the operating system in use.

For **32-bit operating systems** (including XP, Windows 7 32-bit, Server 2008 32-bit, and Server 2003 SP2):

C:\Program Files\QSR Automations\ConnectSmart\KitchenServer\Bin houses Kitchen Server, Kitchen Builder, and Bin Editor.

C:\Program Files\QSR Automations\ConnectSmart\KitchenServer\ClientInstalls\DisplayClient contains the Win32 and CE versions of QSR Display Client.

C:\Program Files\QSR Automations\ConnectSmart\Common\Bin has the ConnectSmart Network Configuration tool and the QSR License Manager.

For **64-bit operating systems** (including Windows 7 64-bit, Server 2008 64-bit, Windows 8, and Server 2012 SP2):

C:\Program Files (x86)\QSR Automations\ConnectSmart\KitchenServer\Bin houses Kitchen Server, Kitchen Builder, and Bin Editor.

C:\Program Files (x86)\QSR Automations\ConnectSmart\KitchenServer\ClientInstalls\DisplayClient contains the Win32 and CE versions of QSR Display Client.

C:\Program Files (x86)\QSR Automations\ConnectSmart\Common\Bin has the ConnectSmart Network Configuration tool and the QSR License Manager.

The location of the data files for these executables also varies by operating system.

For **Microsoft XP and Server 2003 SP2**, all data files for Kitchen Server, Kitchen Builder, Bin Editor, Report Viewer, and more will be written to folders in this location:

C:\Documents and Settings\All Users\Application Data\QSR Automations\ConnectSmart

For **Windows 7 and later operating systems**, the data files and folders are contained within this directory: C:\ProgramData\QSR Automations\ConnectSmart.

**\*Note:** Your [ConnectSmartNetwork.xml](#) file and [ConnectSmart](#) license file are found in ...\\QSR Automations\\ConnectSmart\\Common.

**\*Note:** The data directories (regardless of operating system) are hidden by default, so it is possible you will need to 'unhide' these directories in order to see the data files.

## ConnectSmartNetwork.xml

In addition to the previous requirements, the QsrDisplayClient.exe requires the ConnectSmartNetwork.xml file (found in the ...\\QSR Automations\\ConnectSmart\\Common\\Data folder). The ConnectSmartNetwork.xml file defines the local IP address and station ID for the KitchenClientCE.exe to use.

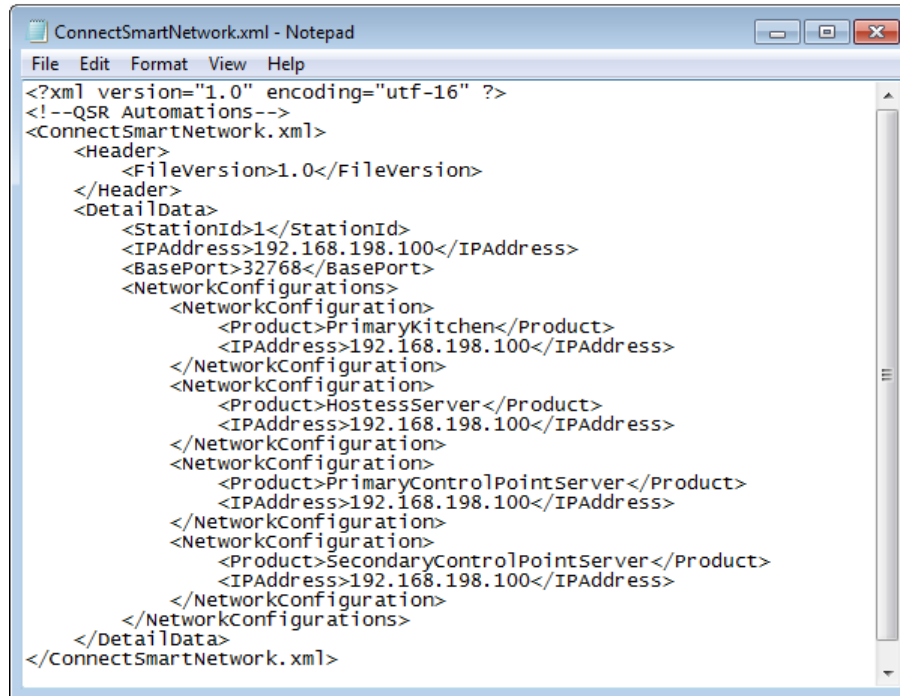


Figure 2.1 – ConnectSmartNetwork.xml file

## Introduction

The Kitchen Server powers all Kitchen applications. When the Kitchen Server starts, it gets all of its XML settings from the KitchenServer\Data folder. When client applications are started, they connect to the Kitchen Server and receive their respective XML settings directly from the Kitchen Server.

**\*Note:** In order to use Display Clients, you will need to run the Kitchen Server.

## Installation Steps

1. To begin the Kitchen Server installation, insert the disk in your Hostess Server PC's CD-ROM drive. Double-click KitchenServerSetup.exe. The ConnectSmart Kitchen Server installer screen appears.

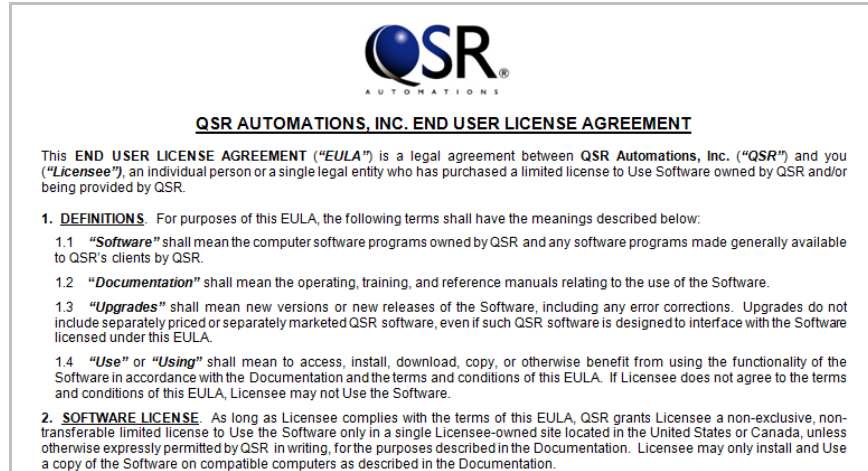


**Figure 3.1 – ConnectSmart Kitchen Server Installer screen**

By default, Kitchen Server, Kitchen Builder, Bin Editor, and Reporting Services are selected to be installed. You can clear (unselect) options you do not want to install.

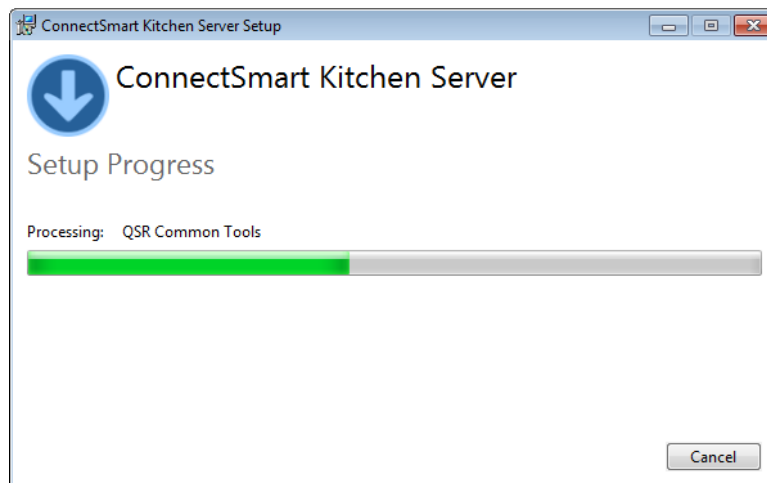
You can select the license terms link to read the end user software license agreement.





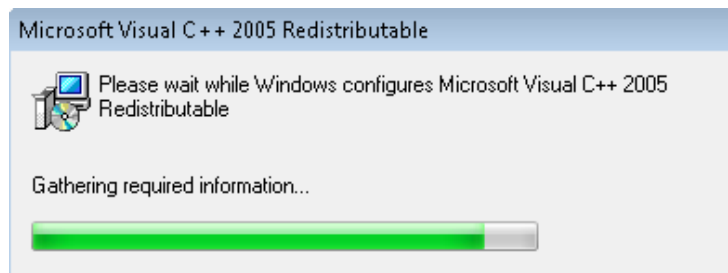
**Figure 3.2— License Agreement**

2. Please read the End User License Agreement carefully. After reading the agreement, select *I agree to the license terms and conditions* and select **Install**. The Setup Progress screen appears.



**Figure 3.3— Installation process begins**

If you do not already have Microsoft Visual C++ installed on your PC, it will be installed automatically.



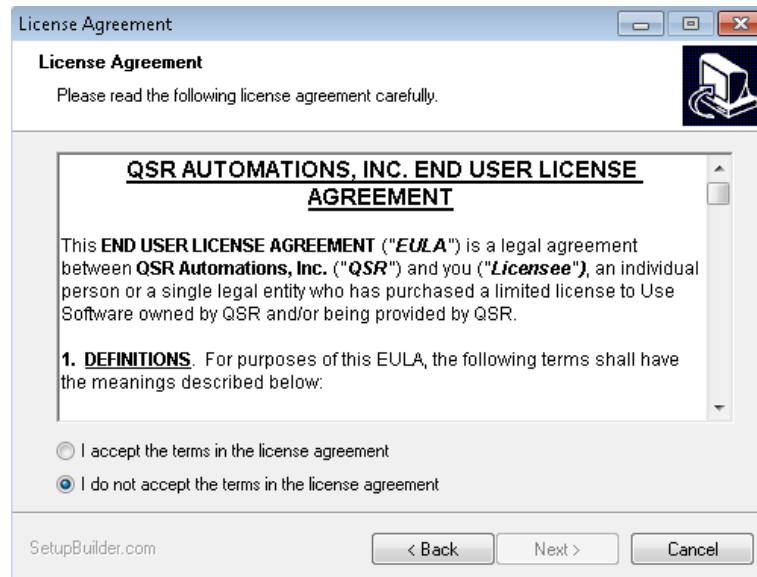
**Figure 3.4— Visual C++ progress**

If you do not have ePic RDS already installed on the machine that will run Kitchen, the ePic RDS installation begins.



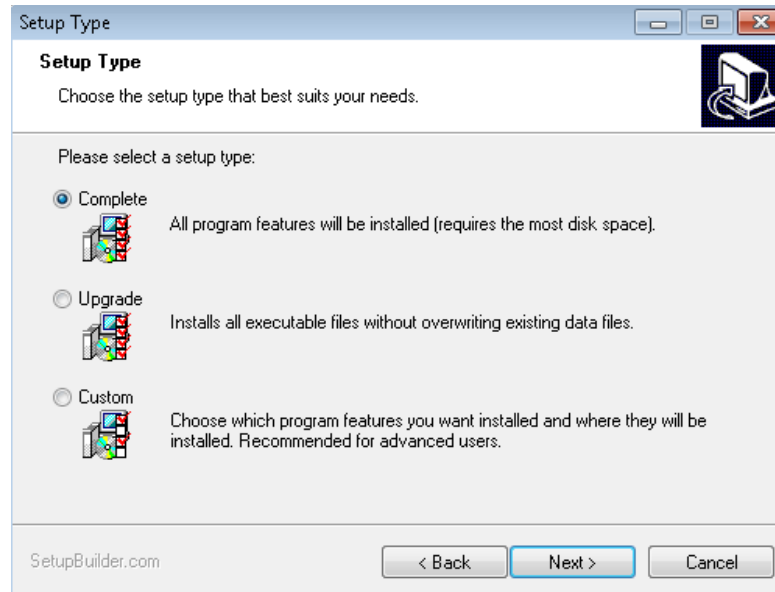
**Figure 3.5— Welcome to the QSR ePic RDS Setup Wizard**

Select **Next** to continue through the ePic RDS Setup Wizard. The License Agreement screen appears.



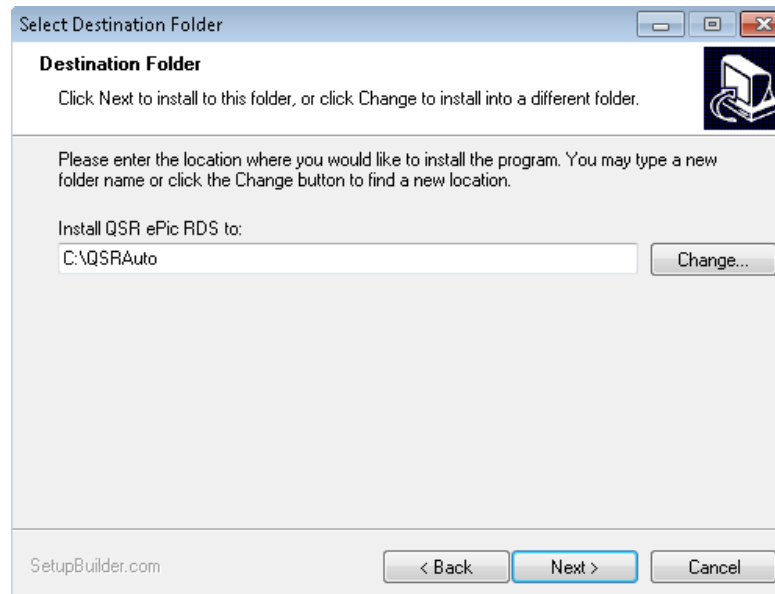
**Figure 3.6— License Agreement screen**

Please read the End User License Agreement carefully. After reading the agreement, select *I accept the terms in the license agreement* and select **Next**. The Setup Type screen appears.



**Figure 3.7 – Setup Type screen**

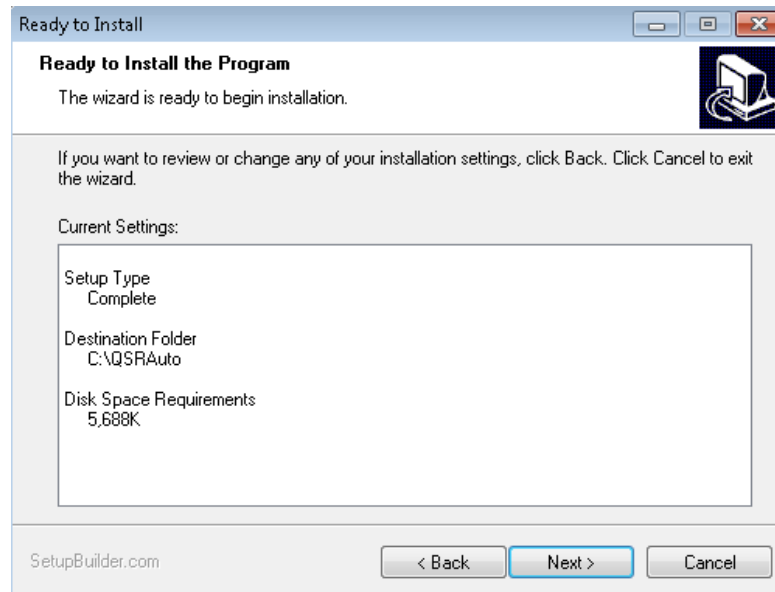
Select a setup type: *Complete*, *Upgrade*, or *Custom*. Select **Next**. The Destination Folder screen appears.



**Figure 3.8 – Destination Folder screen**

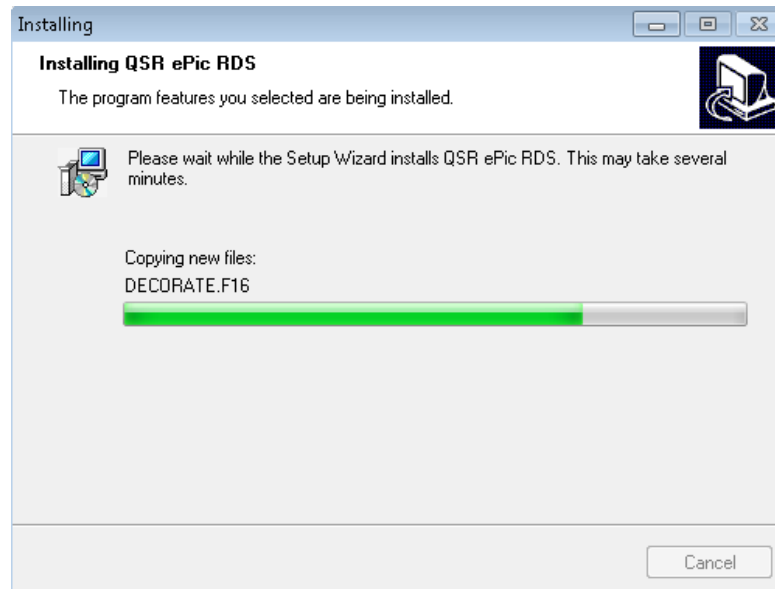
Select the default installation destination for ePic RDS or select **Change** and browse to another destination.

Select **Next**. The Ready to Install the Program screen appears.



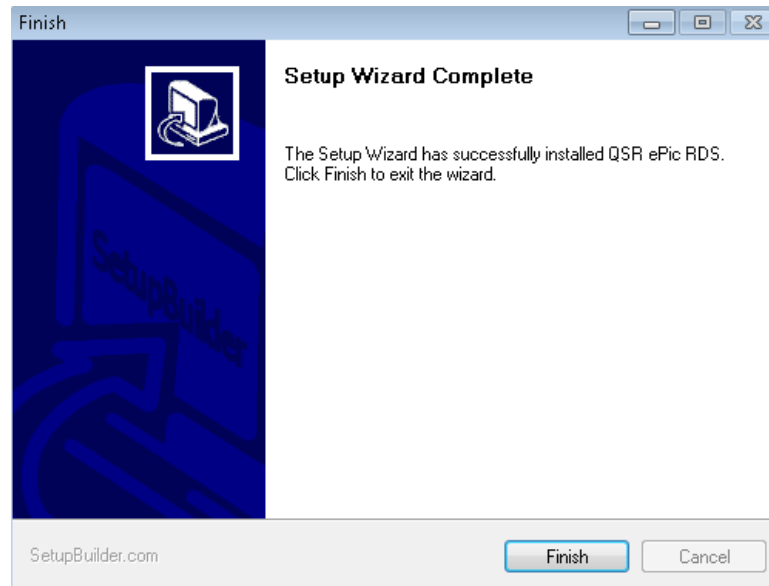
**Figure 3.9— Ready to Install screen**

Review the settings. To begin installation, select **Next**. To quit the installation, select **Cancel**. RDS components are installed. You can see the progress of the installation.



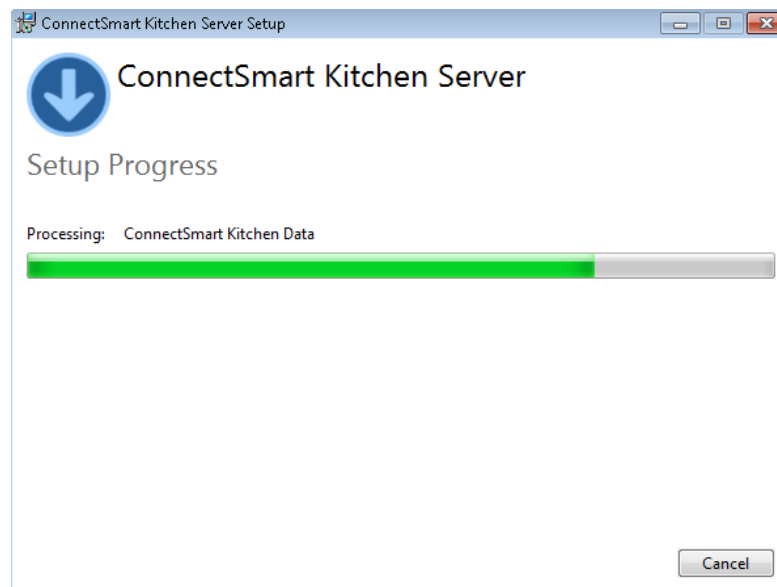
**Figure 3.10— RDS installation progress screen**

When the RDS install completes, a confirmation screen appears.



**Figure 3.11 – RDS Installation Complete**

Select **Finish**. CSK setup continues which includes .NET framework installation.



**Figure 3.12 – CSK installation progress screen**

Once the installation completes, the Setup Wizard Complete screen appears.

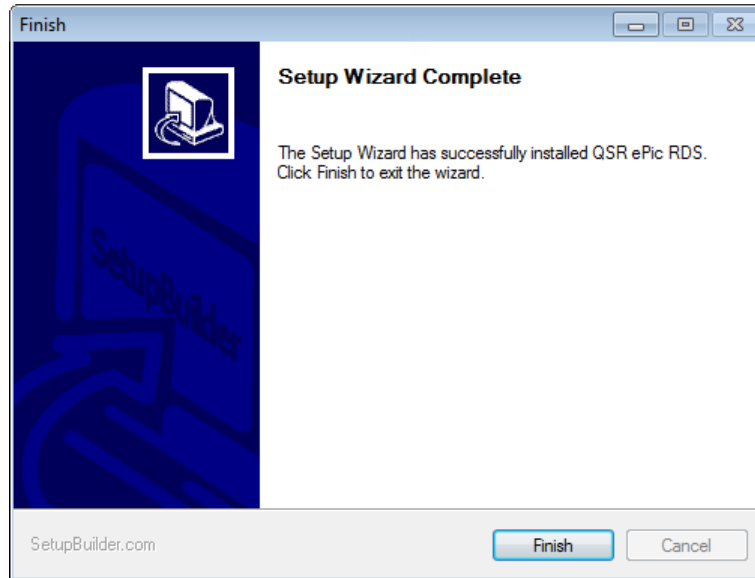


Figure 3.13— Setup Wizard Complete screen

3. Select **Finish**. Meanwhile, when the Kitchen Server installation finishes, the Setup Successful screen appears.

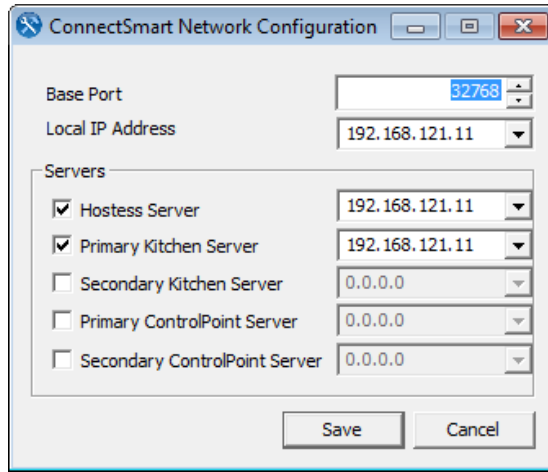


Figure 3.14— Setup Successful screen

4. Select **Close**.

## Network Configuration Manager

Open the Network Configuration application. It can be found in C:\Program Files (x86)\QSR Automations\ConnectSmart\KitchenServer\Common\Bin.



**Figure 3.15 – Network Configuration**

For Base Port, accept the default 32768.

All available IP addresses on the host computer where the software is being installed are listed. If more than one IP address is listed, select the one that will be used by the Kitchen Server service and drag it to the Local IP Address field. If the IP address that will be used is not listed, you can manually enter it in the Local IP Address field.

**\*Note:** The IP address for the Local IP address and Primary Kitchen Server address should be the same.

If you enter an invalid IP address, a warning icon will appear next to the IP address.

Select **Save**.

## Appendix A – Validation

Open the QSR License Manager. Go to C:\Program Files (x86)\QSR Automations\ConnectSmart\KitchenServer\Common\Bin. You will notice a site code for the machine you are currently using.

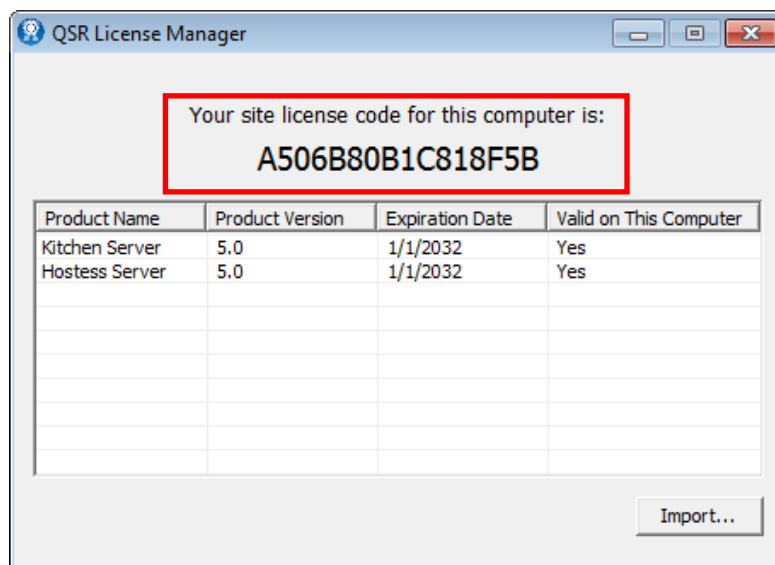


Figure A1 – QSR License Manager

Call QSR Support and supply your site code. QSR then creates a license file and sends it to you. Use the *Import* button on the QSR License Manager tool to import the license file. At this time, you will see the licensed product(s), product version(s), expiration date(s), and validation status on the machine. .

If you want to run the Kitchen Server on multiple PCs (such as for redundant servers), you will need to run the QSR License Manager on all PCs that you plan to run Server on (not the Display Client, just Kitchen Server itself) and get a site code and license file for each PC.

It is recommended that you gather site codes for all PCs before contacting Support so QSR can get all license files created and sent at the same time. If you are part of a larger organization planning to run the Kitchen Server on multiple PCs at multiple locations, contact your sales representative about acquiring a corporate license that will allow you to license the product on multiple computers using the same file.

**\*Note:** The Kitchen Enterprise Service is installed with the other ConnectSmart Kitchen applications and comes with a startup type of Automatic. The Speed of Service Database feature is enabled in your licensing by default. The Kitchen Enterprise Service writes the SpeedOfService.db encrypted database file, which is where Report Viewer gets its data from for reports. So, if you want to run reports, you must start this service.

So, once you import the license file provided by QSR and have a licensed product, start the Kitchen Enterprise Service manually the first time, and it will be running and ready to gather data. After that first manual start, the Kitchen Enterprise Service will restart on its own if the computer is shut down.



**\*Note:** Although the license file includes a demo mode, the demo mode has the following restrictions in the Kitchen Server:

- There is no persistence.
- Kitchen Server shuts down after two hours.
- There is no redundancy.
- A message appears in the Display Client notifying the user they are running demo mode.
- There is no Enterprise connectivity.

# Appendix B – Open Source References

## **Introduction**

This product contains open source software components covered by the following licenses.

## **CrashRpt**

<https://code.google.com/p/crashrpt/>

Copyright (c) 2003, The CrashRpt Project Authors.

All rights reserved.

Redistribution and use in source and binary forms, with or without modification, are permitted provided that the following conditions are met:

- Redistributions of source code must retain the above copyright notice, this list of conditions and the following disclaimer.
- Redistributions in binary form must reproduce the above copyright notice, this list of conditions and the following disclaimer in the documentation and/or other materials provided with the distribution.
- Neither the name of the author nor the names of its contributors may be used to endorse or promote products derived from this software without specific prior written permission.

THIS SOFTWARE IS PROVIDED BY THE COPYRIGHT HOLDERS AND CONTRIBUTORS "AS IS" AND ANY EXPRESS OR IMPLIED WARRANTIES, INCLUDING, BUT NOT LIMITED TO, THE IMPLIED WARRANTIES OF MERCHANTABILITY AND FITNESS FOR A PARTICULAR PURPOSE ARE DISCLAIMED. IN NO EVENT SHALL THE COPYRIGHT HOLDER OR CONTRIBUTORS BE LIABLE FOR ANY DIRECT, INDIRECT, INCIDENTAL, SPECIAL, EXEMPLARY, OR CONSEQUENTIAL DAMAGES (INCLUDING, BUT NOT LIMITED TO, PROCUREMENT OF SUBSTITUTE GOODS OR SERVICES; LOSS OF USE, DATA, OR PROFITS; OR BUSINESS INTERRUPTION) HOWEVER CAUSED AND ON ANY THEORY OF LIABILITY, WHETHER IN CONTRACT, STRICT LIABILITY, OR TORT (INCLUDING NEGLIGENCE OR OTHERWISE) ARISING IN ANY WAY OUT OF THE USE OF THIS SOFTWARE, EVEN IF ADVISED OF THE POSSIBILITY OF SUCH DAMAGE.

## **Libogg**

<http://www.xiph.org/ogg/>

Copyright (c) 2002, Xiph.org Foundation

Redistribution and use in source and binary forms, with or without modification, are permitted provided that the following conditions are met:

- Redistributions of source code must retain the above copyright notice, this list of conditions and the following disclaimer.
- Redistributions in binary form must reproduce the above copyright notice, this list of conditions and the following disclaimer in the documentation and/or other materials provided with the distribution.

- Neither the name of the Xiph.org Foundation nor the names of its contributors may be used to endorse or promote products derived from this software without specific prior written permission.

THIS SOFTWARE IS PROVIDED BY THE COPYRIGHT HOLDERS AND CONTRIBUTORS "AS IS" AND ANY EXPRESS OR IMPLIED WARRANTIES, INCLUDING, BUT NOT LIMITED TO, THE IMPLIED WARRANTIES OF MERCHANTABILITY AND FITNESS FOR A PARTICULAR PURPOSE ARE DISCLAIMED. IN NO EVENT SHALL THE FOUNDATION OR CONTRIBUTORS BE LIABLE FOR ANY DIRECT, INDIRECT, INCIDENTAL, SPECIAL, EXEMPLARY, OR CONSEQUENTIAL DAMAGES (INCLUDING, BUT NOT LIMITED TO, PROCUREMENT OF SUBSTITUTE GOODS OR SERVICES; LOSS OF USE, DATA, OR PROFITS; OR BUSINESS INTERRUPTION) HOWEVER CAUSED AND ON ANY THEORY OF LIABILITY, WHETHER IN CONTRACT, STRICT LIABILITY, OR TORT (INCLUDING NEGLIGENCE OR OTHERWISE) ARISING IN ANY WAY OUT OF THE USE OF THIS SOFTWARE, EVEN IF ADVISED OF THE POSSIBILITY OF SUCH DAMAGE.

## Jpeg Library

<http://www.infai.org/jpeg/>

In plain English:

1. We don't promise that this software works. (But if you find any bugs, please let us know!)
2. You can use this software for whatever you want. You don't have to pay us.
3. You may not pretend that you wrote this software. If you use it in a program, you must acknowledge somewhere in your documentation that you've used the IJG code.

In legalese:

The authors make NO WARRANTY or representation, either express or implied, with respect to this software, its quality, accuracy, merchantability, or fitness for a particular purpose. This software is provided "AS IS", and you, its user, assume the entire risk as to its quality and accuracy.

This software is copyright (C) 1991-1998, Thomas G. Lane.

All Rights Reserved except as specified below.

Permission is hereby granted to use, copy, modify, and distribute this software (or portions thereof) for any purpose, without fee, subject to these conditions:

- If any part of the source code for this software is distributed, then this README file must be included, with this copyright and no-warranty notice unaltered; and any additions, deletions, or changes to the original files must be clearly indicated in accompanying documentation.
- If only executable code is distributed, then the accompanying documentation must state that "this software is based in part on the work of the Independent JPEG Group".

- Permission for use of this software is granted only if the user accepts full responsibility for any undesirable consequences; the authors accept NO LIABILITY for damages of any kind.

These conditions apply to any software derived from or based on the IJG code, not just to the unmodified library. If you use our work, you ought to acknowledge us.

Permission is NOT granted for the use of any IJG author's name or company name in advertising or publicity relating to this software or products derived from it. This software may be referred to only as "the Independent JPEG Group's software".

We specifically permit and encourage the use of this software as the basis of commercial products, provided that all warranty or liability claims are assumed by the product vendor.

## **Libtheora**

<http://theora.org/doc/libtheora-1.0/>

Copyright (C) 2002-2009 Xiph.org Foundation

Redistribution and use in source and binary forms, with or without modification, are permitted provided that the following conditions are met:

- Redistributions of source code must retain the above copyright notice, this list of conditions and the following disclaimer.
- Redistributions in binary form must reproduce the above copyright notice, this list of conditions and the following disclaimer in the documentation and/or other materials provided with the distribution.
- Neither the name of the Xiph.org Foundation nor the names of its contributors may be used to endorse or promote products derived from this software without specific prior written permission.

THIS SOFTWARE IS PROVIDED BY THE COPYRIGHT HOLDERS AND CONTRIBUTORS ``AS IS'' AND ANY EXPRESS OR IMPLIED WARRANTIES, INCLUDING, BUT NOT LIMITED TO, THE IMPLIED WARRANTIES OF MERCHANTABILITY AND FITNESS FOR A PARTICULAR PURPOSE ARE DISCLAIMED. IN NO EVENT SHALL THE FOUNDATION OR CONTRIBUTORS BE LIABLE FOR ANY DIRECT, INDIRECT, INCIDENTAL, SPECIAL, EXEMPLARY, OR CONSEQUENTIAL DAMAGES (INCLUDING, BUT NOT LIMITED TO, PROCUREMENT OF SUBSTITUTE GOODS OR SERVICES; LOSS OF USE, DATA, OR PROFITS; OR BUSINESS INTERRUPTION) HOWEVER CAUSED AND ON ANY THEORY OF LIABILITY, WHETHER IN CONTRACT, STRICT LIABILITY, OR TORT (INCLUDING NEGLIGENCE OR OTHERWISE) ARISING IN ANY WAY OUT OF THE USE OF THIS SOFTWARE, EVEN IF ADVISED OF THE POSSIBILITY OF SUCH DAMAGE.

# Index

---

## A

Administrator Rights, 1

## C

ConnectSmartNetwork.xml, 4

## D

Directories, 3

## F

File Paths, 3

## I

Installation  
    Kitchen Server, 5

## K

Kitchen Enterprise Server, 13  
Kitchen Server, 5

## L

License Manager, 13

## N

Network Configuration, 12

## R

Report Viewer, 13  
Requirements – Display Client, 2  
Requirements – Kitchen Server, 2

## S

Speed of Service, 13  
System Requirements, 2

## V

Validation, 13