

PixelPoint<sup>®</sup>

# **Honeywell Stratos 2700**

In-Counter Scanner/Scale

## Publication Details

### **Copyright**

Copyright © ParTech, Inc. 2018. All Rights Reserved. This product and related documentation are protected by copyright and are distributed under licenses restricting their use, copying, distribution, and decompilation. No part of this product or related documentation may be reproduced in any form by any means without prior written authorization of PAR and any requisite licensors.

### **Trademarks**

PixelPoint, ParTech, and their respective logos are all trademarks of PAR Technology Corporation.

PAR may have patents, patent applications, trademarks, copyrights, or other intellectual property rights covering subject matter in this document.

Except as expressly provided in any written license agreement from PAR, the furnishing of this document does not give you any license to these patents, trademarks, copyrights, or other intellectual property.

Microsoft® and Window s® are registered trademarks of Microsoft Corporation in the United States and/ or other countries. Other product names may be trademarks or registered trademarks of their respective companies and are hereby acknowledged.

### **Disclaimer**

PAR has thoroughly reviewed this document and believes it to be reliable. However, this document is provided for informational purposes only and PAR makes no warranties, either expressed or implied, in this document. Information in this document is subject to change without notice. Risk of use and responsibility for the results of use of this document lie with the user.

### **Patents**

The following patents apply to some areas of functionality within the PixelPoint software suite: Pat. 6,384,850; 6,871,325; 6,982,733; 8,146,077; 8,287,340

Table of Contents

**Overview ..... 4**

**Installation ..... 5**

**Scale Configuration and Setup ..... 7**

**Scale Testing and Usage..... 8**

**Receipt Variables ..... 9**

## Overview

This document provides configuration and setup information for the Honeywell Stratos 2700 Bioptic Scanner/Scale to be used with PixelPoint POS. Please refer to the manufacturer's product documentation for complete installation and configuration information for the scale/scanner unit.

## Requirements

- PixelPointPOS v 12.3.30
- ScannerScaleStratos2700.DLL v 2018.2.20
  - Place in C:\PixelPOS\DLLS
- Honeywell Stratos 2700 Scanner/Scale
  - OPOS\_CCOs\_1.14.001.msi or higher (from Honeywell website)
  - Honeywell OPOS Suite\_1\_13\_4\_25.zip or higher (from Honeywell website)



## Installation

The scale/scanner unit can be configured to function within the POS as a scale, scanner, or both. If you require only one of the two functions, follow the instructions for the function you wish to use (scale or scanner). If you wish to use the unit as both a scale and a scanner, follow both sets of instructions shown below. For this integration, only the RS232 connection is required.

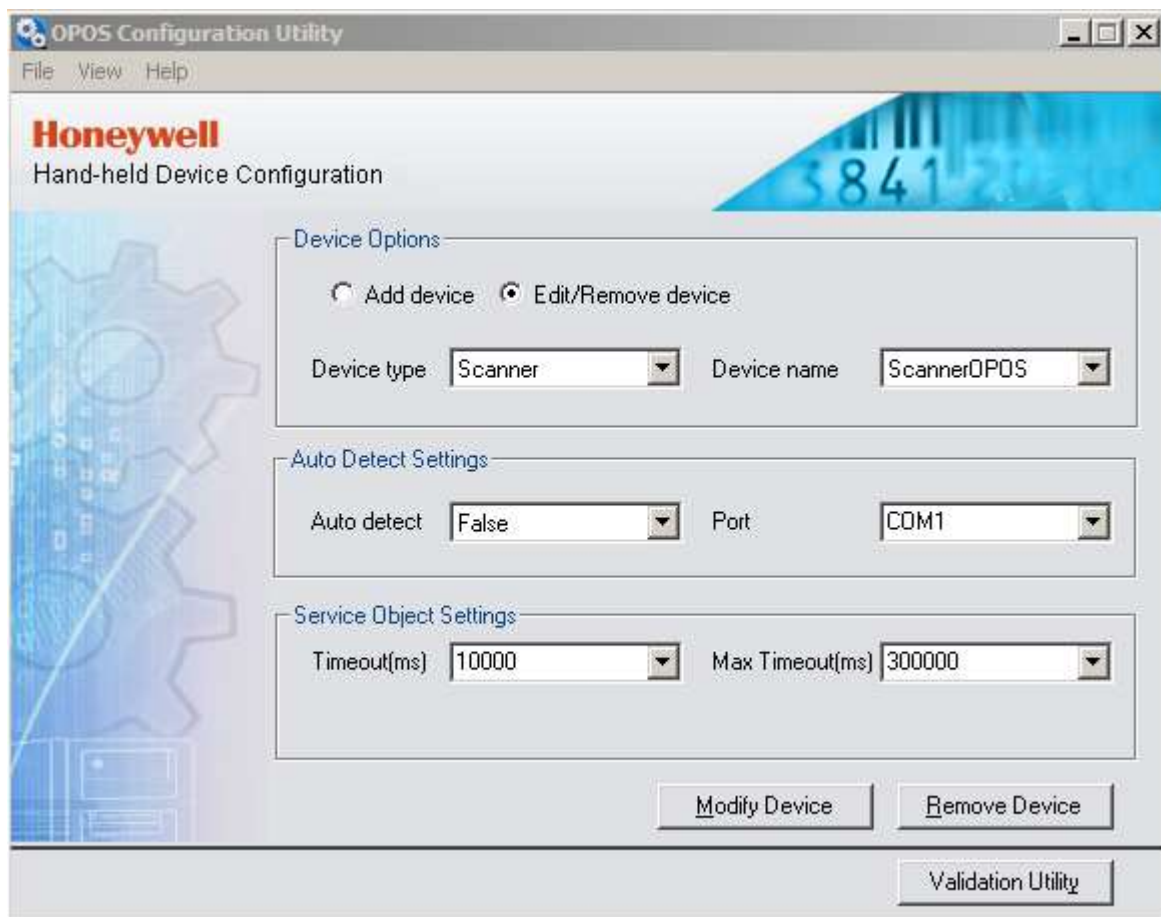
## Hardware and Drivers

Download the required OPOS Configuration Utility and product documentation from the manufacturer website. If connecting the scale/scanner using a USB cable, an additional driver may be required.

<https://www.honeywellaidc.com/products/barcode-scanners/in-counter/stratos-2700>

## Scanner Installation

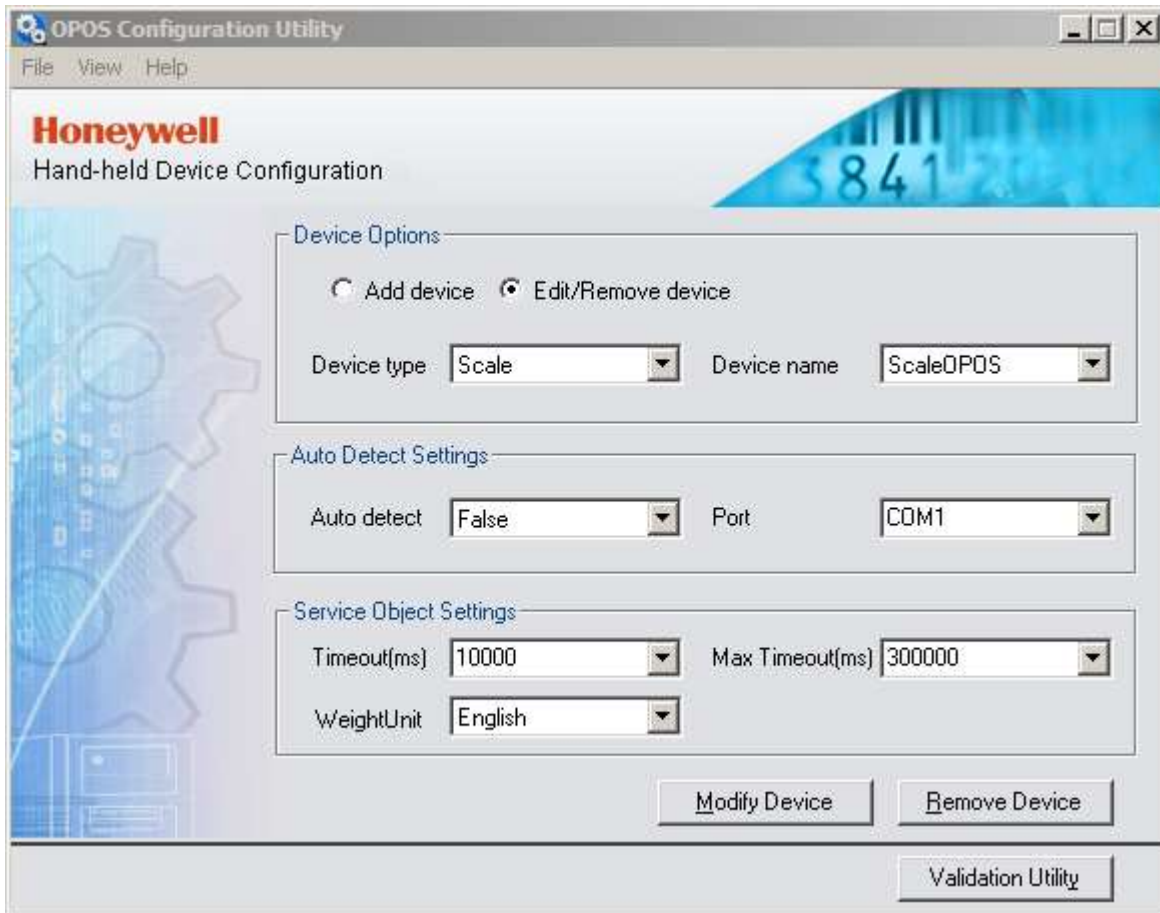
Run the OPOS Configuration Utility and complete the required steps so the scanner can communicate with the terminal. In the Device Options section, select Scanner as the Device Type and ScannerOPOS as the Device name. Configure the rest of the settings as needed.



Once the scanner installation has been completed, items can be scanned by simply placing a barcode in front of the scanner while PixelPoint is running.

## Scale Installation

Run the OPOS Configuration Utility and complete the required steps so that the scale can communicate with the terminal. In the Device Options section, select Scale as the Device Type and ScaleOPOS as the Device Name.



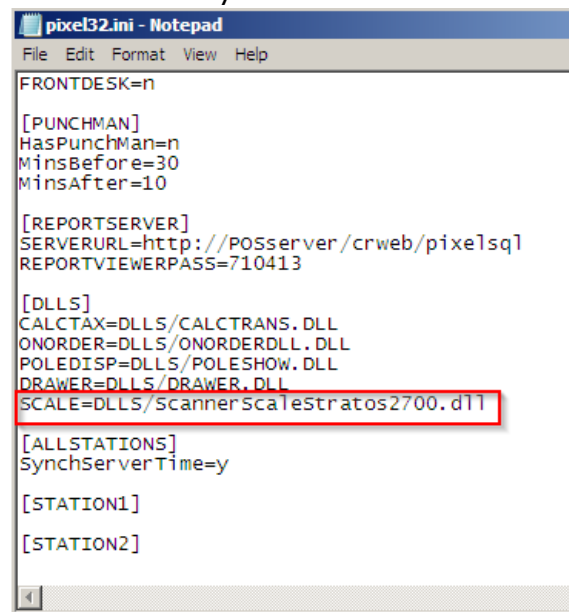
The screenshot shows the 'OPOS Configuration Utility' window with the 'Honeywell Hand-held Device Configuration' title. The interface includes a menu bar (File, View, Help) and a background image of a scale display showing '3841.20'. The main configuration area is divided into three sections: 'Device Options', 'Auto Detect Settings', and 'Service Object Settings'. In the 'Device Options' section, the 'Edit/Remove device' radio button is selected, and the 'Device type' is set to 'Scale' and 'Device name' is set to 'ScaleOPOS'. In the 'Auto Detect Settings' section, 'Auto detect' is set to 'False' and 'Port' is set to 'COM1'. In the 'Service Object Settings' section, 'Timeout(ms)' is set to '10000', 'Max Timeout(ms)' is set to '300000', and 'WeightUnit' is set to 'English'. At the bottom right, there are buttons for 'Modify Device', 'Remove Device', and 'Validation Utility'.

Section	Setting	Value
Device Options	Device type	Scale
	Device name	ScaleOPOS
Auto Detect Settings	Auto detect	False
	Port	COM1
Service Object Settings	Timeout(ms)	10000
	Max Timeout(ms)	300000
	WeightUnit	English

## Scale Configuration and Setup

Once the required drivers have been successfully installed and the scale/scanner is connected to the terminal, some further configuration is required for scale functionality:

1. Copy the file ScannerScaleStratos2700.dll into C:\PixelPOS\DLLS.
2. Open the file Pixel32.ini and insert the following line in the DLLS section.
  - **Scale=DLLS/ScannerScaleStratos2700.dll**
3. From within BackOffice, navigate to Products>Product Setup.
4. Create a new product, or select an existing product that will be weighed on the scale.
5. Select the Advanced tab and check the box Weighed Item On Scale. Enter a Tare Weight (if required) and select a Unit Description.
6. Save the changes made to the product and repeat steps 4 & 5 for each item that will be weighed on the scale.



```
pixel32.ini - Notepad
File Edit Format View Help
FRONTDESK=n

[PUNCHMAN]
HasPunchMan=n
MinsBefore=30
MinsAfter=10

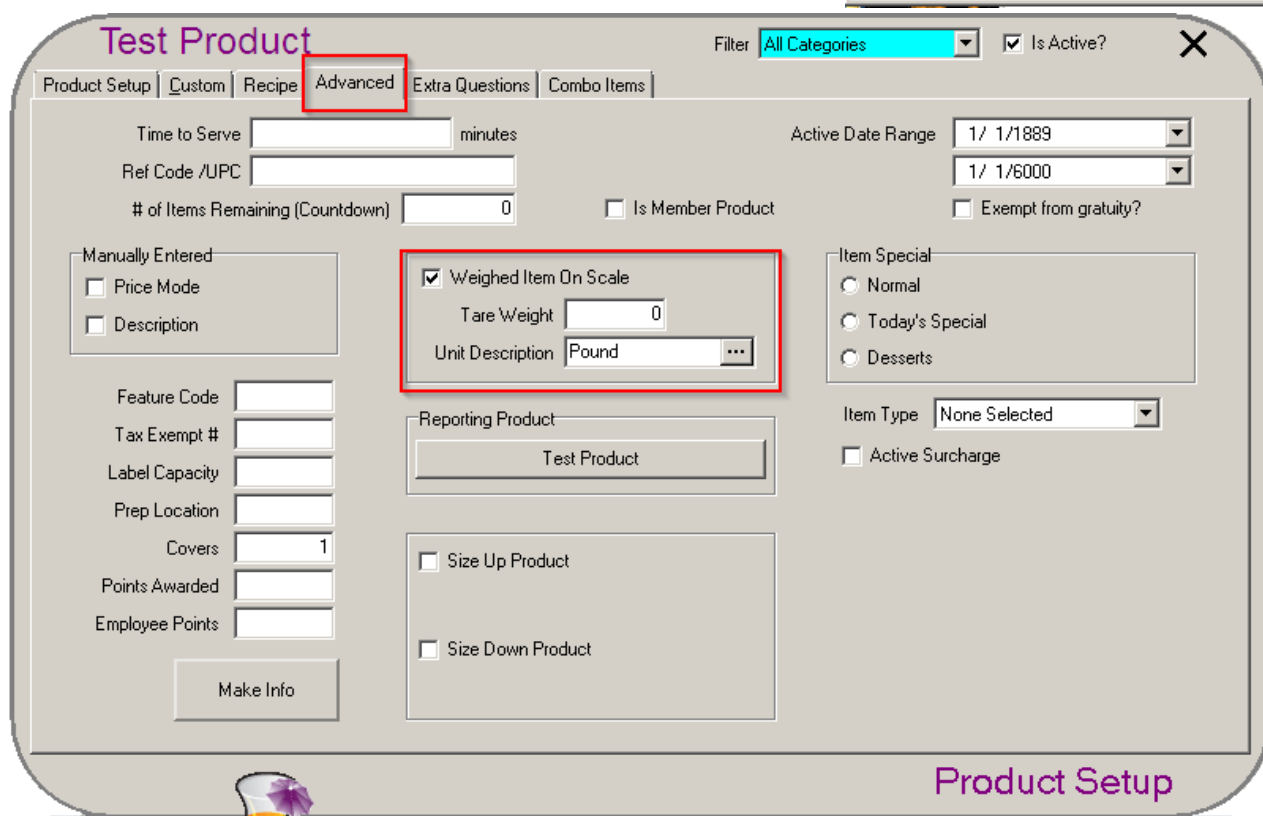
[REPORTSERVER]
SERVERURL=http://POSServer/crweb/pixelsql
REPORTVIEWERPASS=710413

[DLLS]
CALCTAX=DLLS/CALCTrans.DLL
ONORDER=DLLS/ONORDERDLL.DLL
POLEDISP=DLLS/POLESHOW.DLL
DRAWER=DLLS/DRAWER.DLL
SCALE=DLLS/ScannerScaleStratos2700.dll

[ALLSTATIONS]
SynchServerTime=y

[STATION1]

[STATION2]
```



**Test Product**

Filter: All Categories ☒ Is Active?

Product Setup | Custom | Recipe | **Advanced** | Extra Questions | Combo Items

Time to Serve: \_\_\_\_\_ minutes  
Ref Code /UPC: \_\_\_\_\_  
# of Items Remaining (Countdown): 0 ☐ Is Member Product ☐ Exempt from gratuity?

Manually Entered  
☐ Price Mode  
☐ Description

Feature Code: \_\_\_\_\_  
Tax Exempt #: \_\_\_\_\_  
Label Capacity: \_\_\_\_\_  
Prep Location: \_\_\_\_\_  
Covers: 1  
Points Awarded: \_\_\_\_\_  
Employee Points: \_\_\_\_\_  
Make Info

☒ **Weighed Item On Scale**  
Tare Weight: 0  
Unit Description: Pound ...

Reporting Product  
Test Product

☐ Size Up Product  
☐ Size Down Product

Item Special  
☐ Normal  
☐ Today's Special  
☐ Desserts

Item Type: None Selected  
☐ Active Surcharge

**Product Setup**

## Scale Testing and Usage

Once the scale has been installed and configured, open PixelPoint POS to test its functionality.

1. Create a new order and add a product that was configured in the previous section to be weighed on the scale.
2. When the item is added to the order, the Scale Live Weight window will appear. Place the item on the scale. The window will display the weight in the unit of measurement selected for the chosen product.
3. Once the desired amount of product is on the scale, press Enter to add the item to the order. The price of the item will be calculated based on the weight.



4. Repeat these steps for every additional item as required.



## Receipt Variables

When selling items that are weighed on a scale, the following variables are required to appear on the custom receipt to show how the price of the item was calculated. This is required for NTEP Weights and Measures compliance.

**&format\_weightunit=LB** (can be changed to whatever unit of measurement is chosen by the customer).

**&format\_weightitem=&weight\_quantity&weight\_unit@weight\_cost/&weight\_unit**

ixel Print Emulator - Printer Name: EMULATO

?! \* NOT FOR RESALE \* !  
NFR TEST - KYLE  
(204) 325-7886  
T a b l e Q # 1  
Trans#: 2267 Serv: Supervisor  
02/11/2015 02:19:19 PM #Cust:1

Quan	Description	Cost
0.010	Scale Product	\$0.01
0.0100	LB @ \$1.00/LB	

Net Total: \$0.01  
TIP: \$0.00  
TOTAL : \$ 0 . 0 1

CASH \$0.01

GST # 106419013 RT0001  
?! \* NOT FOR RESALE \* !

Print Close History