



# **PixelPoint HQ Report Viewer User Guide**

## Report Viewer (Crystal Reports)

You can run and view crystal reports the same way you run them at the store using ReprotViewer.exe

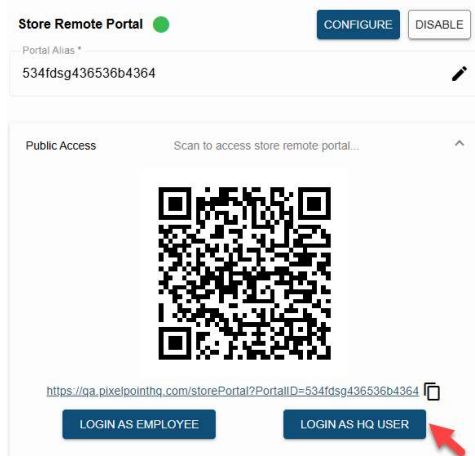
## Requirements

The assumption is POS is installed and configured on the system. The ReportViewer.exe exist.

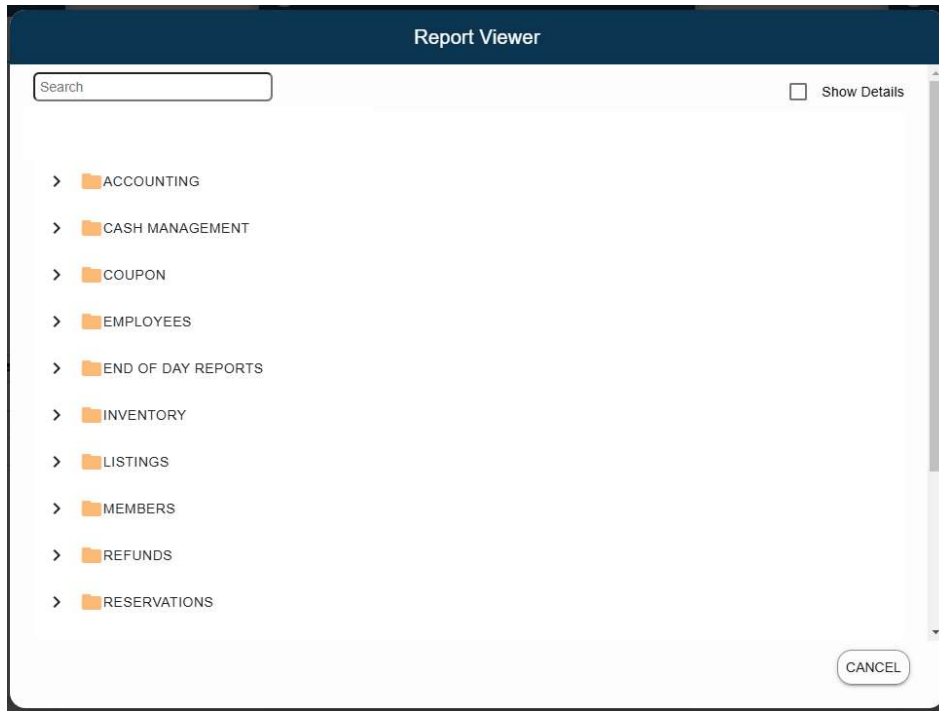
- Licence Manager v17 or higher
- PixelPointHQEOIConnector v256 (No need to have an EOI station, it is only needed for EOI ordering)
- ReportViewer.exe (minimum 20.57.3.20 - might require .NET 4.8 framework)

## How to use the Report Viewer in PixelPoint HQ:

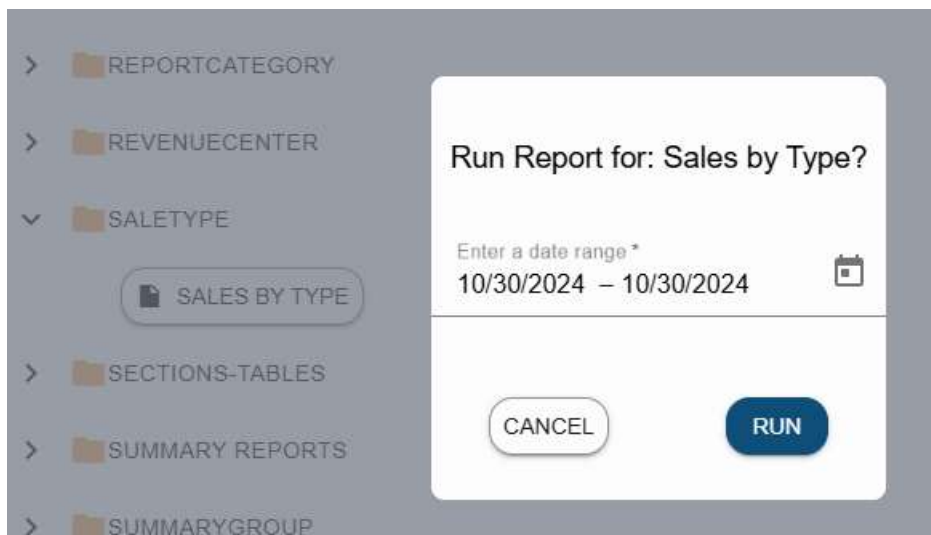
- Enable the Store Remote Portal.
- Run PixelPointHQEOI Connector and enter the store token to connect it to the store.
- Once the green circle is on, login as HQ user.



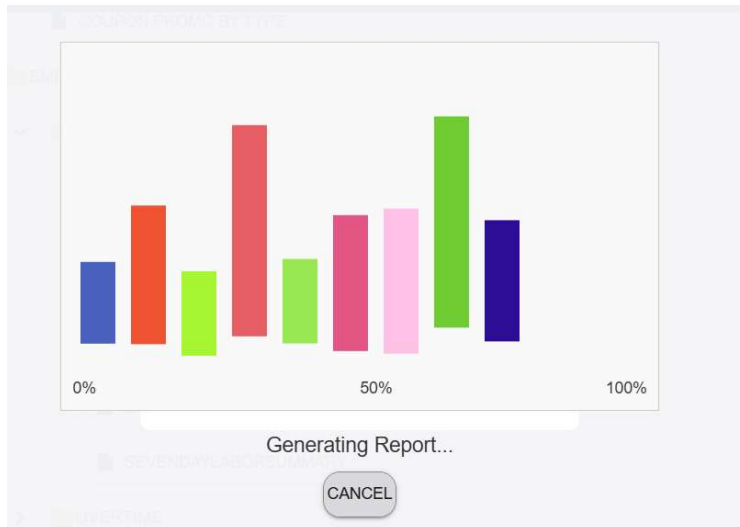
- There will be a Report Viewer in menu.
- The Report viewer will show the report tree same as the store will be.
- Select a folder and a report to run.



- Enter a date range if required.



- Select Run button.
- It will be a progress animation on the screen while the report is generating.



**Nahal Thommes NFR**

## Sales by Type

Type of Sale  
 ----Summary Group  
 ----Report Category

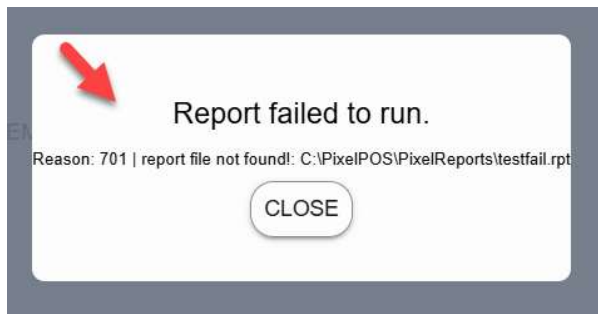
From : October 1, 2024  
 To : October 22, 2024

	Qty	%Qty	Value	% Value
For Here				
Combos				
Combos	2	4.2	15.00	2.9
Combos	2	4.2	15.00	2.9
Drinks				
Drinks	3	6.3	19.85	3.8
Drinks	3	6.3	19.85	3.8
Other				
Modifier	-1	-2.1	-2.00	-0.4
Other	-1	-2.1	-2.00	-0.4
Pizza				
ATC Large Pizzas	28	58.3	348.24	66.4
Original XXL Pizzas	5	10.4	81.95	15.6
STC Large Pizzas	8	16.7	58.73	11.2
Pizza Toppings	3	6.3	3.00	0.6
Pizza	44	91.7	491.92	93.7
For Here	48	100.0	524.77	100.0
<b>Grand Totals</b>	<b>48</b>		<b>524.77</b>	

End of Report

**Note:** Allow pop ups for PixelPointHQ website should be enabled otherwise you will not see the report on the new tab is showing. (see page 5 for how to enable pop ups)

If the report failed to run, the following is an example of the error shows on the screen.



## **How to enable pop ups:**

### **Google Chrome**

- Open Chrome
- Click the three dots in the top right corner
- Select Settings
- Click Privacy and security
- Click Site settings
- Click Pop-ups and redirects
- To allow all pop-ups, click the circle next to Sites can send pop-ups and use redirects
- To allow pop-ups on specific websites, scroll to Allowed to send pop-ups and use redirects, and click Add

### **Microsoft Edge**

- Open Microsoft Edge
- Click the three horizontal dots in the top menu
- Right click on Settings from the drop-down menu
- Click Cookies and site permissions from the left panel
- Scroll down the page and click on Pop-ups
- Type in the URL that you want to allow to create pop-ups into the dialog box
- Select Add

### **Safari (macOS)**

- From the Safari menu, choose Preferences
- Click the Security tab
- Ensure the Block pop-up windows option is not checked