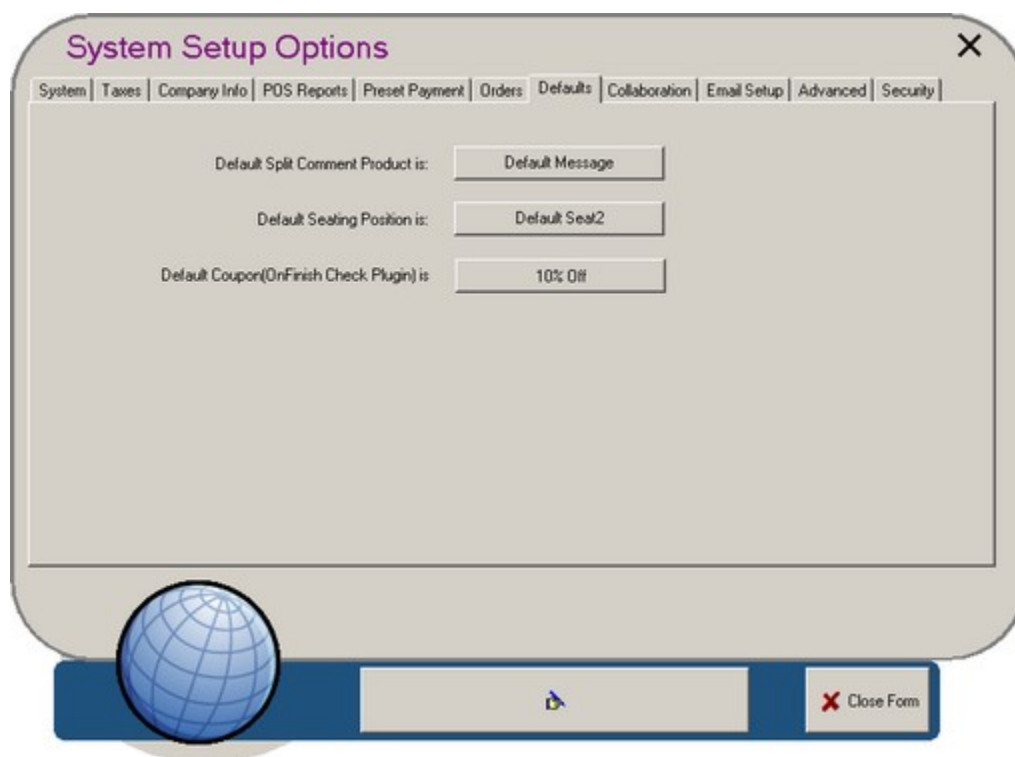


## Defaults Tab

### Administrator / System Setup / Defaults

This tab is generally only used for troubleshooting purposes – i.e. if some programming that should not be changed has been changed. Note that these fields are already programmed for you when you first run PixelPoint POS. Those programming the database for the first time may find these options useful, but careful attention should be paid to the way in which they are used.



#### Default Split Comment Product is

The product that PixelPoint POS uses to print the labels for splits ("Split 1 of 2", for example). You can select any product with a 'Manual Keyboard' product type, but the actual content of the label is determined in the language table of the database or the "NewLanguage.txt" file your system is using. By default, the product here is "Default Message", which is a product that comes preprogrammed in the database. If you want to change the label for each "split", you must modify the entry in the language table of the database.

#### Default Seating Position is

A product PixelPoint POS uses for seat labels. The product here should be one with a "Seating Position" product type (like the default product, "Default Seat"). If you want to create a seating position product, follow the steps below.

#### To program seats:

1. Go into [Product Setup](#).

2. Create a product with a 'Seating Position' product type.
3. Name the product according to what you want each seating position to be called.
  - "Seat", or "Guest", for example.
4. Add the seating position product to an order page in Menu Setup.
  - A useful option for seating positions is feature code 105, which automatically orders items in the amount equal to the number of customers as soon as you open a check.

With this done, your remote prints that use seats will include identifiers such as 'Seat 1', 'Seat 2' and so on. If you labeled the product, say, "Guest", the identifiers will be "Guest 1", "Guest 2", etc.

**Default Coupon (OnFinish Check Plugin) is**

An OnFinish Check Plugin DLL may be programmed to use a particular coupon or the default one. The default one is selected here. Refer to the OnFinish Check Plugin Interface document for more information regarding this feature and its use.