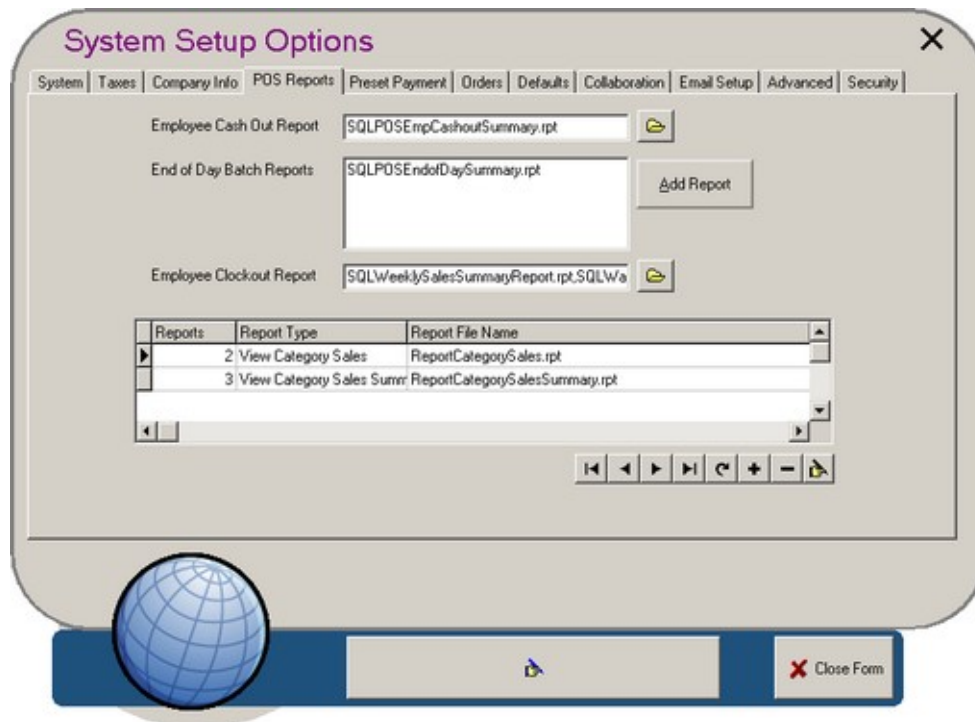


## POS Reports Tab

### Administrator / System Setup / POS Reports

This tab focuses on the application of reports to various front-end operations.



**Employee Cash Out Report:** The report to be used when an employee cashes out. By selecting the folder icon, you can choose different reports to run; hold the CTRL key to select more than one. The default report was specially designed for employee cash outs and it is recommended that you use it.

**End of Day Batch Reports:** The report(s) to be applied to the End of Day process. [Add Reports] enables you to include additional reports.

---

**Note:** You can only use 40-column reports for the Employee Cash-Out and End of the Day report. 40-column reports start with "SQLPOS" in the file name. The browse window for selecting the reports automatically filters the appropriate reports for you.

**Employee Clockout Report:** The report(s) to be used when an employee clocks out.

**Reports Table:** At the front-end, located within the Manager Functions menu, is a Sales Function sub-menu that enables you to get quick views of sales-related reports. This table enables you to specify what reports will be available for quick viewing. The reports here are 80 column reports.