

PixelPoint[®]

BackOffice Policies in v18

Publication Details

Copyright

Copyright © ParTech, Inc. 2018. All Rights Reserved. This product and related documentation are protected by copyright and are distributed under licenses restricting their use, copying, distribution, and decompilation. No part of this product or related documentation may be reproduced in any form by any means without prior written authorization of PAR and any requisite licensors.

Trademarks

PixelPoint, ParTech, and their respective logos are all trademarks of PAR Technology Corporation.

PAR may have patents, patent applications, trademarks, copyrights, or other intellectual property rights covering subject matter in this document.

Except as expressly provided in any written license agreement from PAR, the furnishing of this document does not give you any license to these patents, trademarks, copyrights, or other intellectual property.

Microsoft® and Window s® are registered trademarks of Microsoft Corporation in the United States and/ or other countries. Other product names may be trademarks or registered trademarks of their respective companies and are hereby acknowledged.

Disclaimer

PAR has thoroughly reviewed this document and believes it to be reliable. However, this document is provided for informational purposes only and PAR makes no warranties, either expressed or implied, in this document. Information in this document is subject to change without notice. Risk of use and responsibility for the results of use of this document lie with the user.

Patents

The following patents apply to some areas of functionality within the PixelPoint software suite: Pat. 6,384,850; 6,871,325; 6,982,733; 8,146,077; 8,287,340

Overview

As of PixelPoint 18.6.x, the policies used to customize the POS are no longer being stored in an XML file, but in the PixelPoint database. This allows for policies to be replicated from HeadOffice. All existing policy settings will be copied into the db during the required SQL update.

Policies are now edited in the new version of BackOffice (18.6) instead of in Systemset. Policies in BackOffice support managing both global policy settings, as well as managing policies on an individual (station) level.

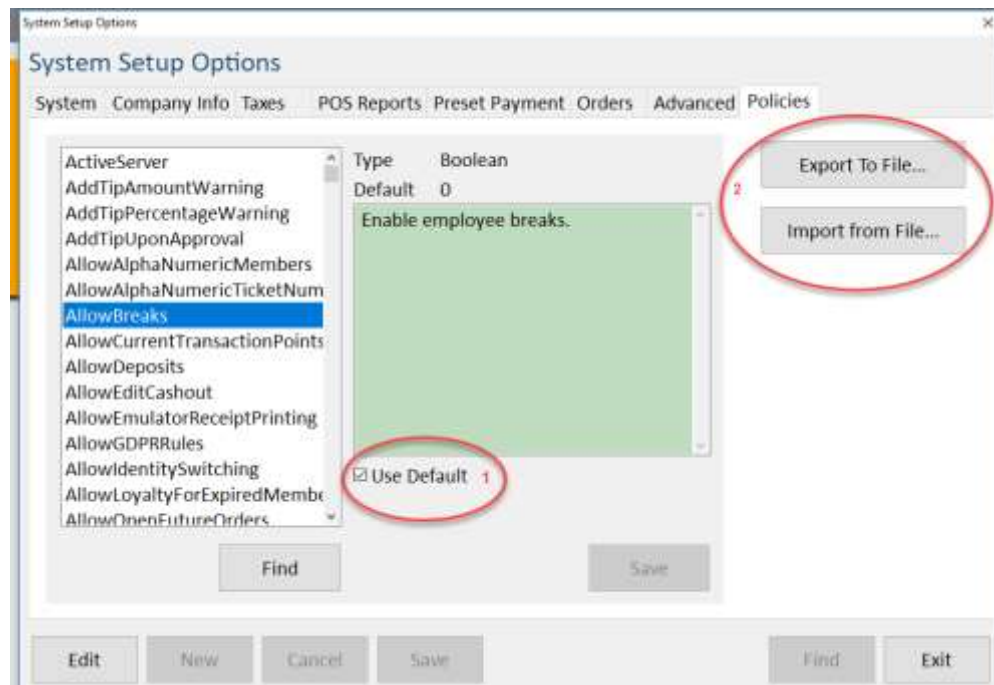
Requirements

- PixelPointPOS v18.6.x
- BackOffice v18.6.x

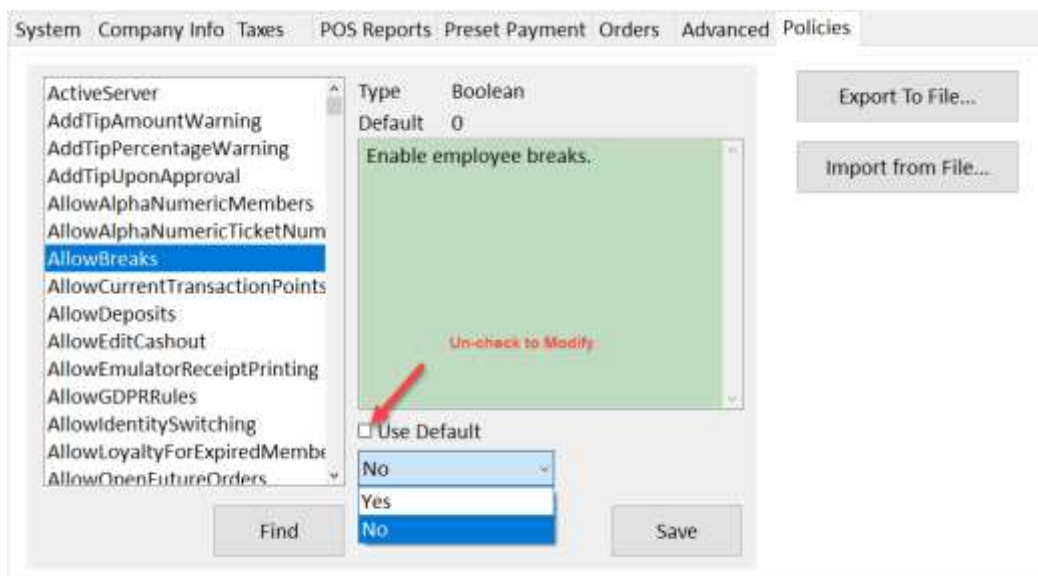
Global Policy Settings

To manage policies for all terminals in the environment:

1. In BackOffice navigate to System Configuration.
2. In the resulting System Setup Options window, select the Policies tab.



3. The field on the left side of the window contains all policies, sorted alphabetically. The Find button can be used to search for a specific policy. Once a policy is selected, the middle section of the window will display the policy description and details.
4. Uncheck the Use Default box (fig.1) to edit the Policy. Once unchecked, the available policy options will be shown. Once the desired changes have been made, select the Save button. The Save button must be selected for each individual policy change.

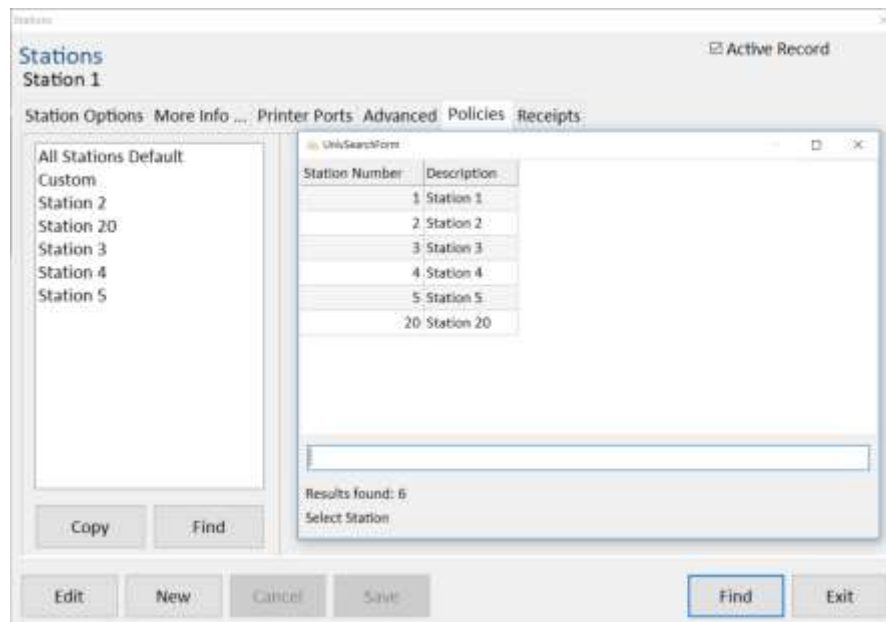


5. Policy settings can now be both exported and imported to be saved or loaded onto a system at another store (fig. 2). Use the appropriate button on the right-hand side of the window to export or import the global policy settings.

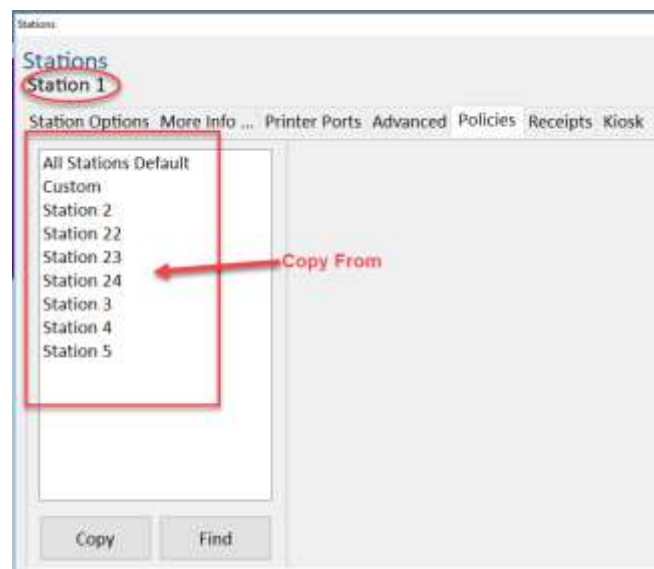
Station Policy Settings

To edit policies for an individual station:

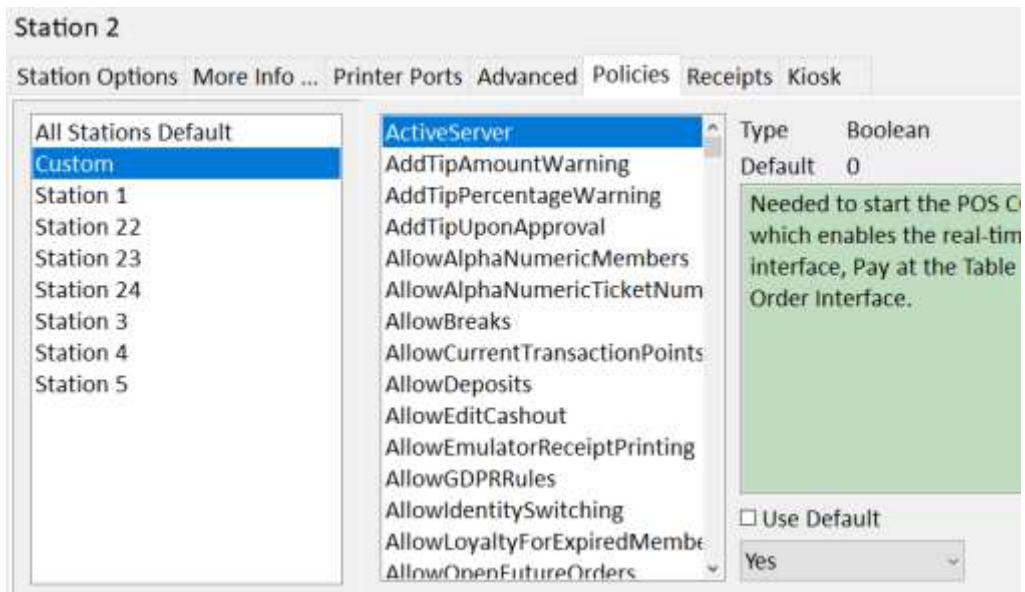
1. Open BackOffice and use the search bar to navigate to the Stations tile.
2. Select the Policies tab.
3. Select the Find button in the bottom-right corner of the screen and in the resulting window, select the Station for which you wish to edit policy information.



4. Once a station has been selected, the field on the left-hand side of the window will show all Stations in the environment. If you wish to copy the Policy settings from a different station, select the station from the field on the left and click Copy. The Find button can be used to search for a specific station within the environment.



5. To modify individual policies for the station, select Custom from the left-hand menu. The list of policies will appear on the right.



6. As with the Global settings, policies can be searched for using the Find button and changed by unchecking the Use Default box. The save button must be selected after making each desired policy change before moving on to the next. All policy changes selected here will be applied ONLY to the station number displayed in the top-left corner of the screen (Station 2, in the above screenshot).